



Gloucester Place, NW1

£1,175 Per week

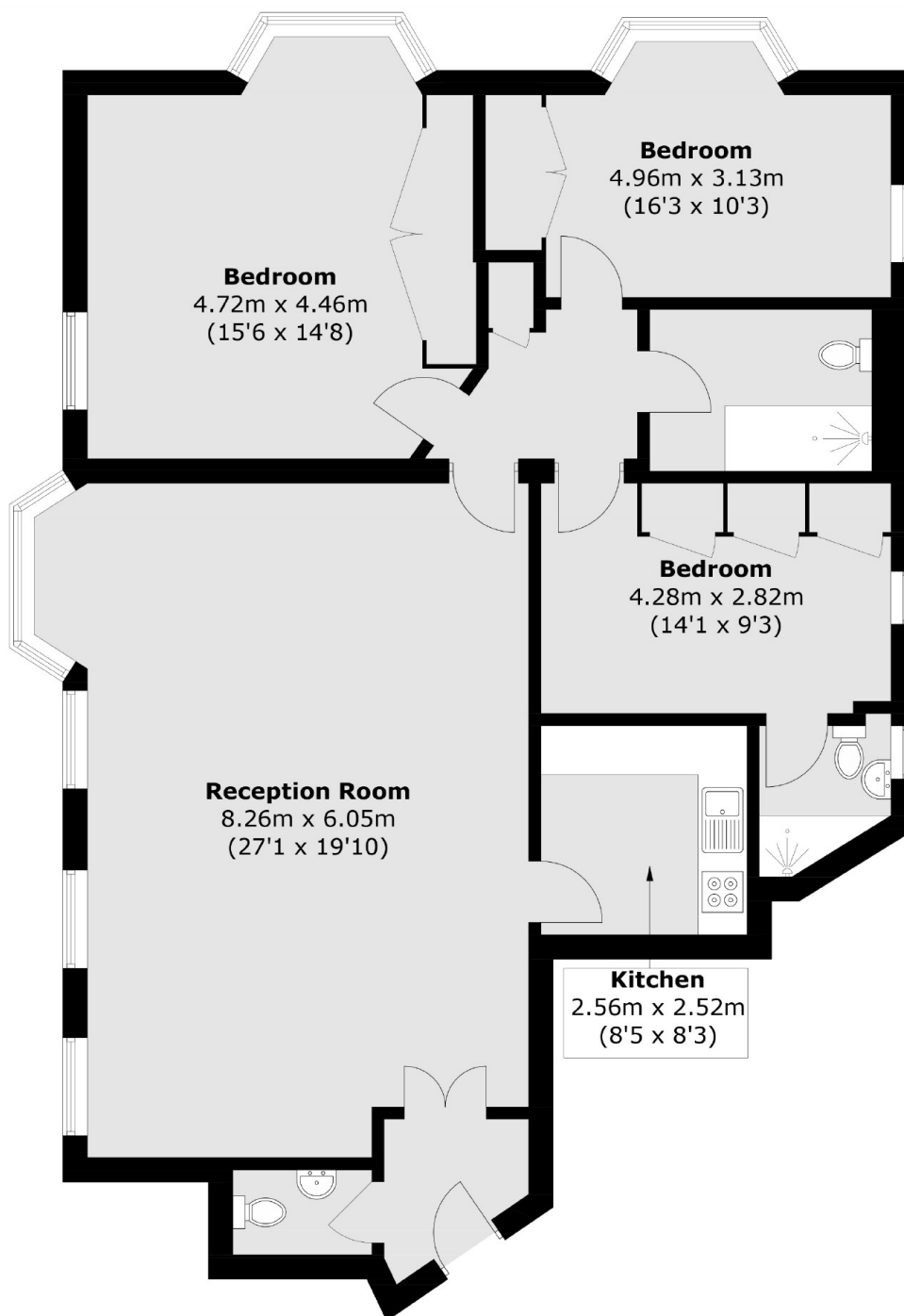
This three bedroom apartment is on the seventh floor of this 1930's apartment block, moments from Baker Street. The flat has a reception room, kitchen, three bedrooms, bathroom and a guest WC.

The building is accessed via a grand art deco style canopied entrance from Gloucester Place. Residents are greeted by a team of uniformed porters who are on site 24-7 and two lifts leading to all floors. There are numerous transport links from Marylebone, Baker Street, Regent's Park and Great Portland Street stations.

Features

- Portered Building
- Seventh Floor, With Lift
- Three Bedrooms
- Bathroom & Guest WC
- Unfurnished
- Balconies

Gloucester Place, London, NW1



Total area (approx.): 122.0 sq. m (1,313.2 sq. ft)