



Gloucester Place, NW1

£450 Per week

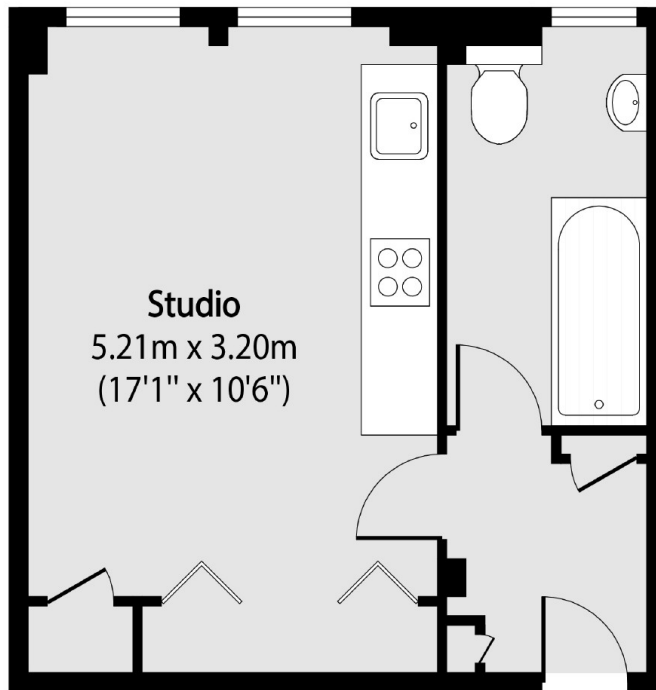
HEATING & HOT WATER INCLUDED IN RENT. A well presented studio apartment set within a popular apartment block with lift and 24hr porter. The apartment has been completely modernised throughout to include an open plan kitchen, modern bathroom and built in storage.

Ivor Court is conveniently located within short walking distance of Regents Park as well as Baker Street and Marylebone Stations.

Features

- Studio Apartment
- Modern Specification
- Wood Flooring
- Lift & 24hr Porter
- Heating & Hot Water Inc.
- Good Storage

Gloucester Place, London, NW1



Total area (approx): 25.64 sq m (276 sq. ft)