



Montagu Street, W1H

£375 Per week

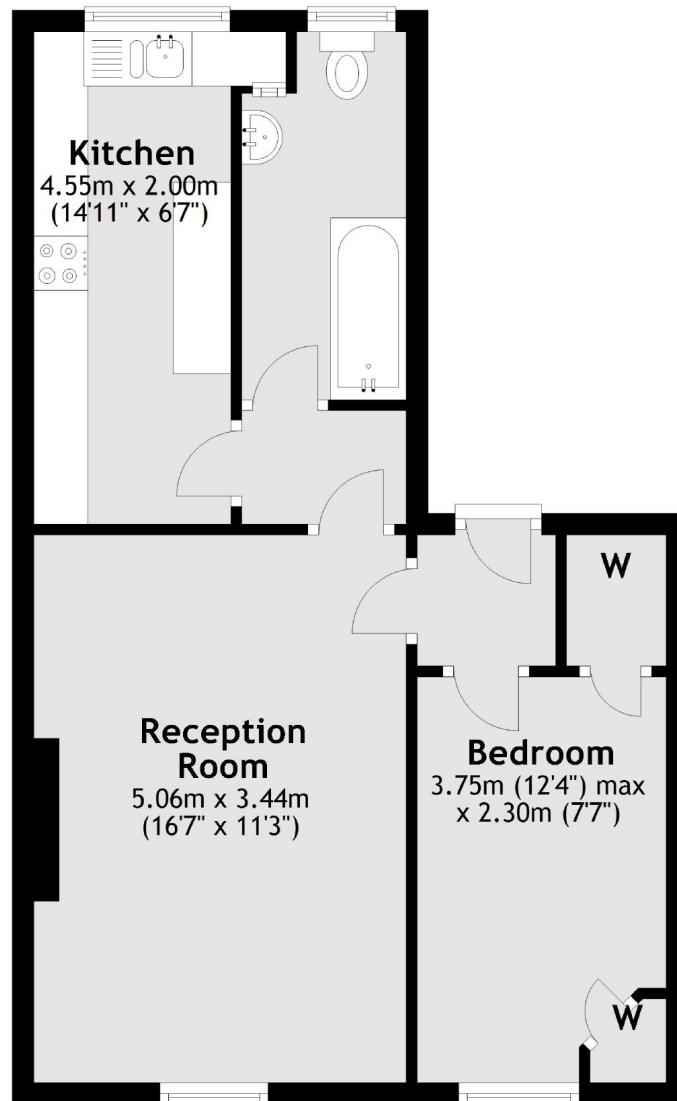
A one bedroom apartment on the second floor of an attractive period building in Marylebone. The property has a good sized reception, separate kitchen and bathroom.

Montagu Street is just south of Montagu Square, and within easy reach of Marble Arch and Hyde Park. The vibrant shops, bars and restaurants of Marylebone High Street are close by.

Features

Second Floor
One Bedroom
One Bathroom
Separate Kitchen
Unfurnished
The Portman Estate

Montagu Street,
London, W1H



Second Floor

Total area: approx. 45.5 sq. metres (490.3 sq. feet)

Contact

To arrange a viewing call our office on the number below or visit our website.



Energy Rating: C. We aim to make our particulars both accurate and reliable. However they are not guaranteed; nor do they form part of an offer or contract. If you require clarification on any points then please contact us, especially if you're traveling some distance to view. Please note that appliances and heating systems have not been tested and therefore no warranties can be given as to their good working order.