



## Great Cumberland Place, W1H

£1,150 Per week

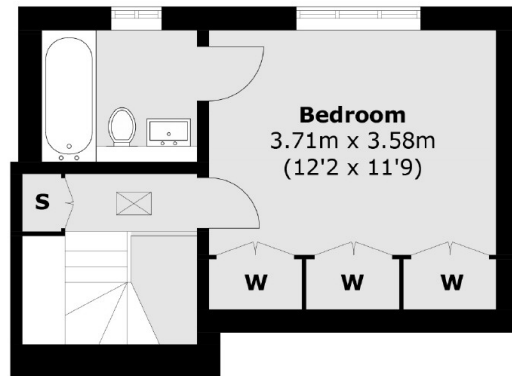
A well-presented two bedroom apartment arranged over the ground, first and second floors of a Georgian conversion on Great Cumberland Place. The flat has an open-plan kitchen/reception, two en suite double bedrooms and a guest WC.

Great Cumberland Place is a short walk from Marylebone High Street. Portman Village is just a few streets away and is home to a variety of independent restaurants, cafés and wine bars, popular with locals and tourists alike.

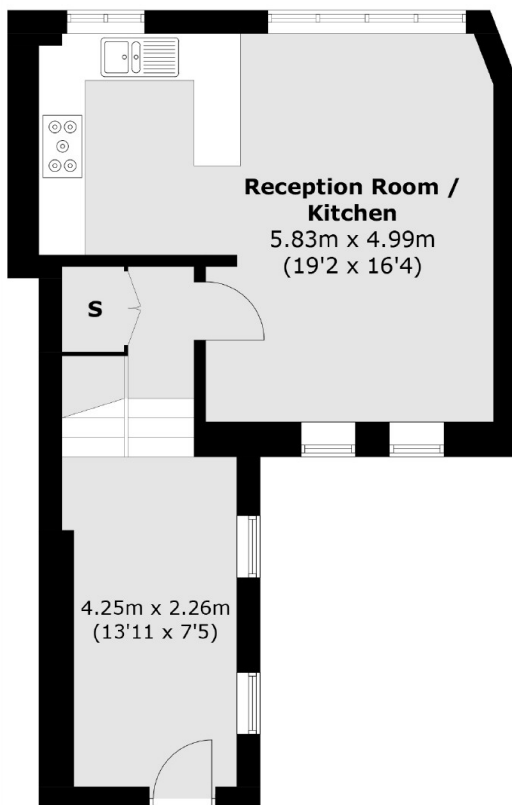
### Features

- Two Double Bedrooms
- Kitchen/Reception
- Two Bathrooms
- Unfurnished
- Owned and Managed by The Portman Estate
- Complimentary Membership to Portman Concierge

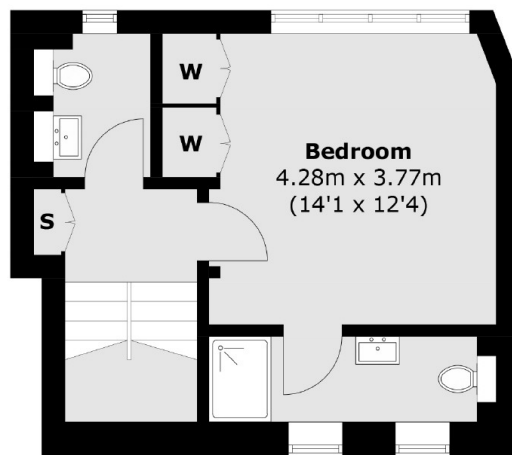
# Great Cumberland Place, London, W1H



**Second Floor**



**Ground Floor**



**First Floor**

Total area (approx.): 90.5 sq. m (974.0 sq. ft)

## Dexters

Marylebone  
53-55 Weymouth Street  
London  
W1G 8NJ  
Lettings  
0207 224 5545

Energy Rating: C. We aim to make our particulars both accurate and reliable. However they are not guaranteed; nor do they form part of an offer or contract. If you require clarification on any points then please contact us, especially if you're traveling some distance to view. Please note that appliances and heating systems have not been tested and therefore no warranties can be given as to their good working order.

 **RICS** | Regulated  
Estate Agent  
and Letting Agent

[dexters.co.uk](https://www.dexters.co.uk)