



Balcombe Street, NW1

£685,000

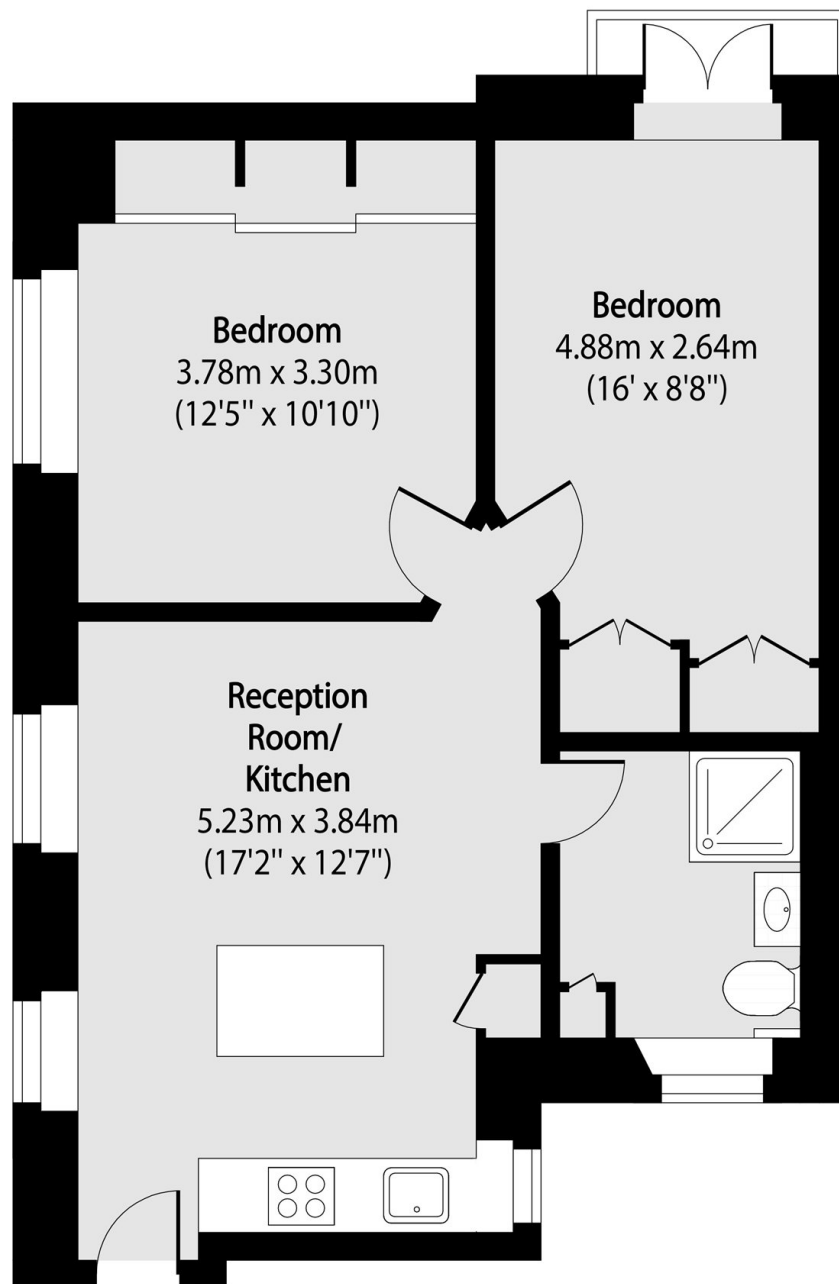
A two bedroom apartment located in this brick apartment block. The apartment has a remaining lease of 973 years and a share in the freehold.

Located in the Dorset Square conservation area between Marylebone Station and Regents Park.

Features

- Two Bedrooms
- Open Plan Reception/Kitchen
- Shower Room
- Share of Freehold
- Low service charges
- Conservation Area

Balcombe Street, London, NW1



Total area (approx): 50.72 sq m (546 sq. ft)