

Montagu Square
Marylebone, W1H

Dexters



About the property

A substantial three bedroom apartment occupying the entire ground and lower ground floors of this Grade II Listed building on Montagu Square.

The property has been decorated with great care and attention to detail, blending contemporary design with classic proportions. There is a double reception room on the ground floor with a Juliet balcony from the dining room. The kitchen has modern built-in appliances, ample storage and doors leading out onto a private terrace.

All three bedrooms are en suite double rooms with built-in storage. Further features include a utility room, guest WC and two private terraces.

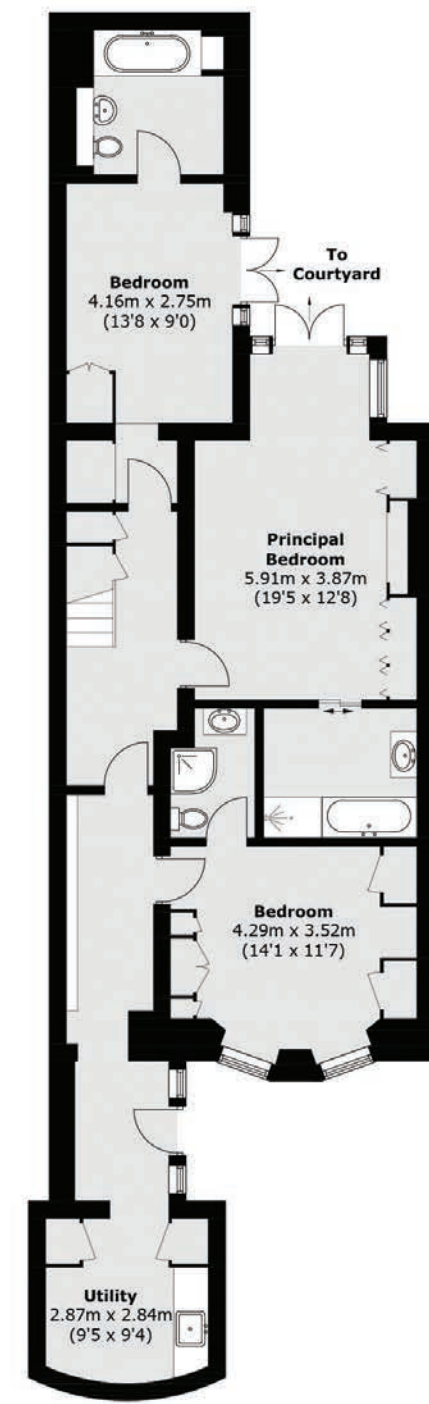
Montagu Square offers resident-only gardens in the heart of central London. Both Hyde Park and Regent's Park are close by, along with the vibrant shops, bars, cafés and restaurants of Marylebone High Street and Portman Village. There are transport links available at Marble Arch, Edgware Road, Marylebone and Baker Street stations.

Key features

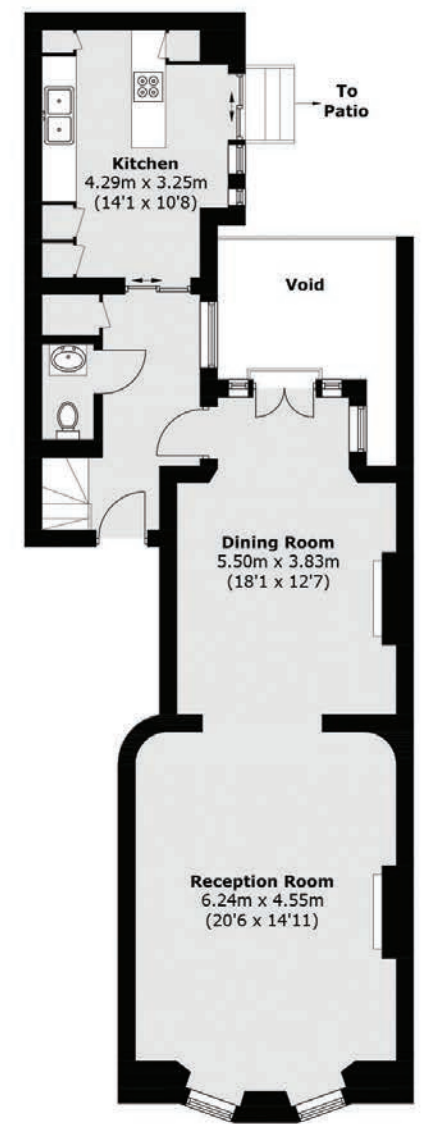
- Garden Square
- Double Reception
- Eat-In Kitchen
- Three Bedrooms
- Three Bathrooms
- Private Terrace







Lower Ground Floor



Ground Floor

TOTAL APPROX. FLOOR AREA 1,871.8 SQ. FT (173.9 SQ. M) (EXCLUDING VOID)

Energy Rating: C. We aim to make our particulars both accurate and reliable. However they are not guaranteed; nor do they form part of an offer or contract. If you require clarification on any points then please contact us, especially if you're traveling some distance to view. Please note that appliances and heating systems have not been tested and therefore no warranties can be given as to their good working order.



Dexters Marylebone
55 Weymouth Street
London, W1G 8NJ
020 7224 5545

Dexters