



Bryanston Square, W1H

£865 Per week

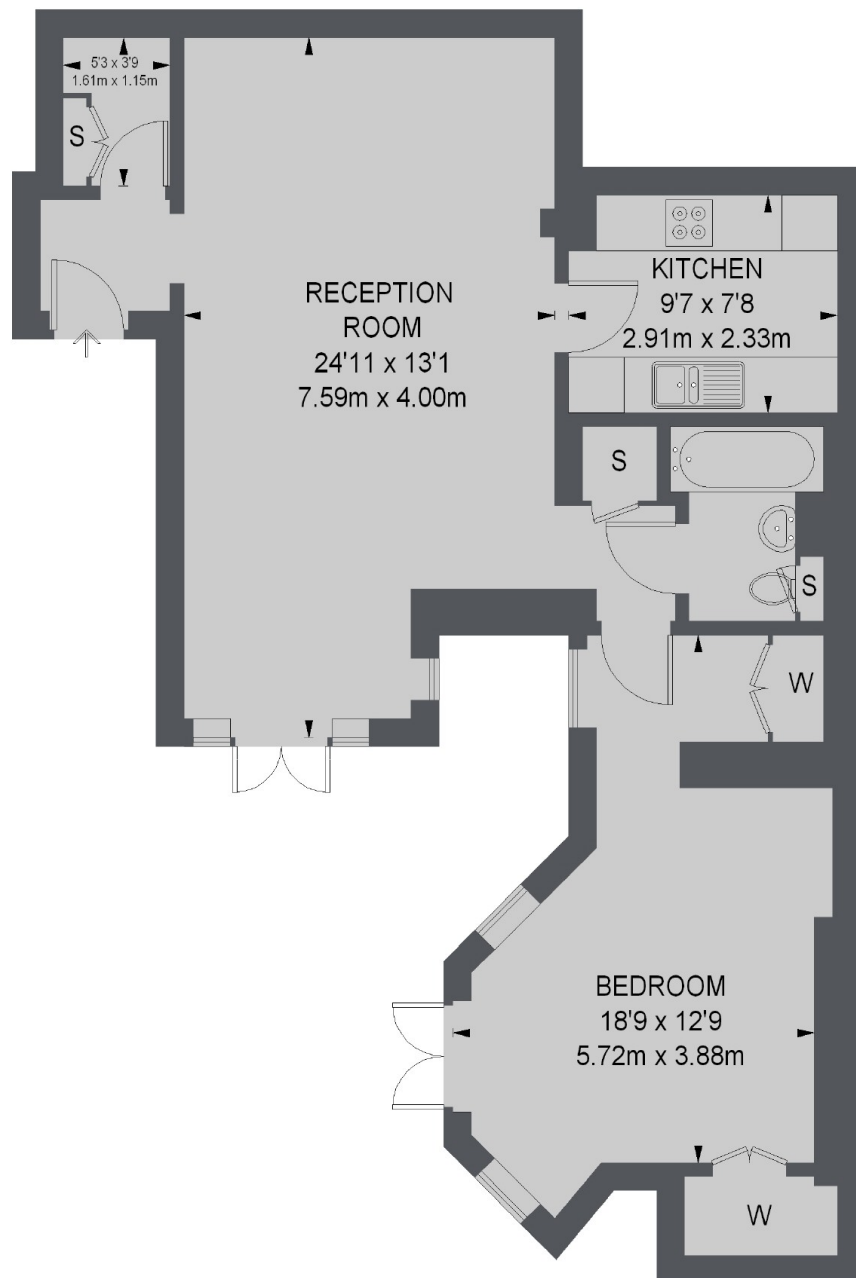
A large one bedroom apartment on the lower ground floor of a Georgian conversion in Marylebone. This modern flat has an open-plan living room, wooden flooring and a private patio.

Bryanston Square is just a block away from the Portman Village for an array of vibrant boutique shops, bars and restaurants.

Features

- One Bedroom
- One Bathroom
- Wooden Flooring
- Private Patio
- Owned and Managed by The Portman Estate
- Complimentary Membership to Portman Concierge

Bryanston Square, London, W1H



TOTAL APPROX. FLOOR AREA 721 SQ. FT. (66.97 SQ. M.)

Dexters

Marylebone
53-55 Weymouth Street
London
W1G 8NJ
Lettings
0207 224 5545

Energy Rating: C. We aim to make our particulars both accurate and reliable. However they are not guaranteed; nor do they form part of an offer or contract. If you require clarification on any points then please contact us, especially if you're traveling some distance to view. Please note that appliances and heating systems have not been tested and therefore no warranties can be given as to their good working order.

 **RICS** | Regulated
Estate Agent
and Letting Agent

[dexters.co.uk](https://www.dexters.co.uk)