



Allsop Place, NW1

£1,200 Per week

A three double bedroom, three bathroom apartment with two private courtyards. Located in a modern residential building with a lift and concierge.

Located between the world class retail and restaurants of Marylebone High Street and the greenery of Regents Park.

Features

- Three Double Bedrooms
- Three Bathrooms
- Semi Open-Plan Reception
- Outdoor Space
- Day Concierge
- Lift



Allsop Place, NW1

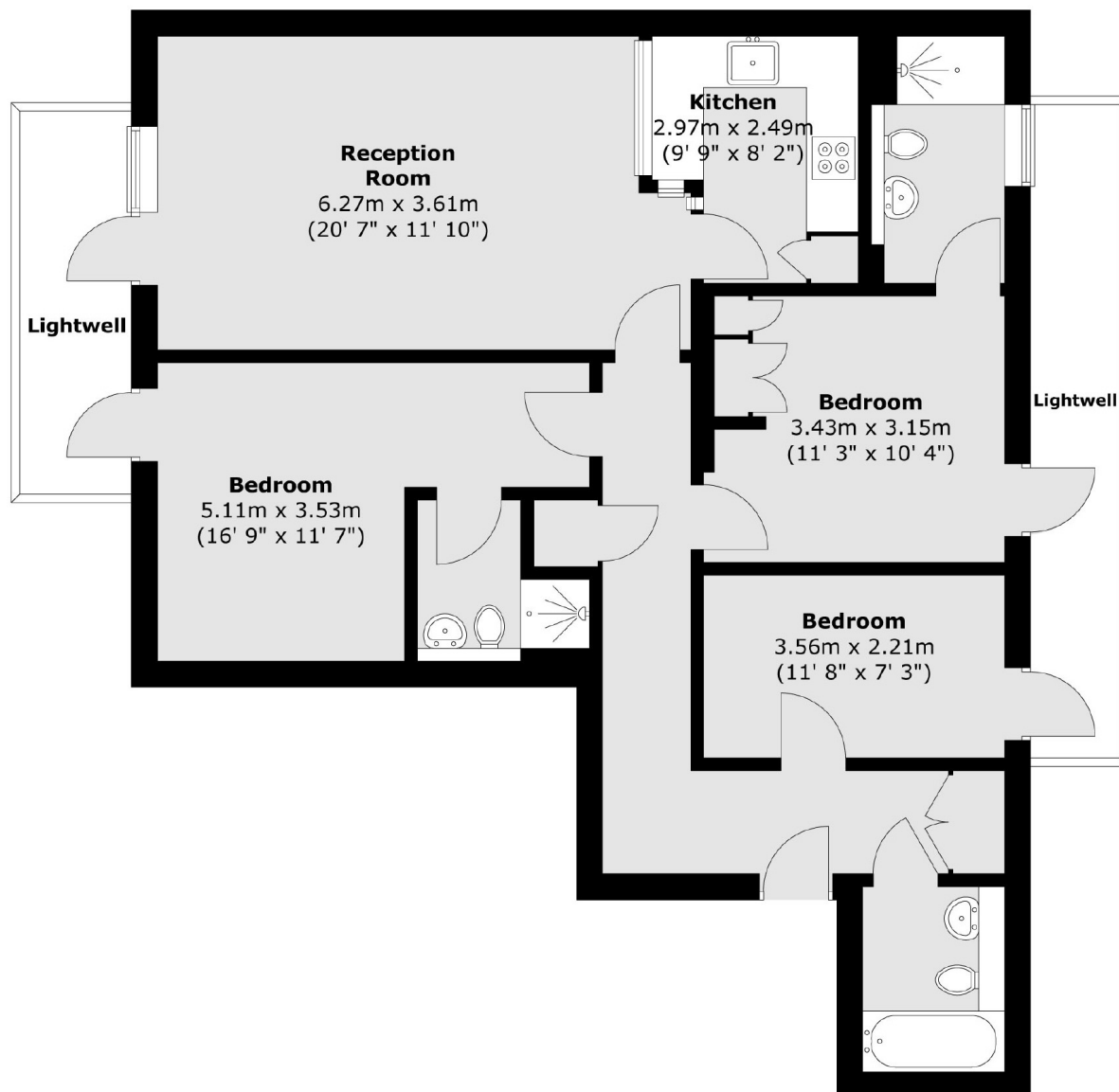
The apartment has three double bedrooms, two of which are en suite and open to private courtyards. The reception room has a combined living and dining area and also opens to a courtyard .

The modern integrated kitchen is arranged separately behind a glass screen and door providing the area with natural light. Additionally there is a third bathroom/guest W.C.



Allsop Place, London, NW1

Lower Ground Floor



Total area (approx.) : 90.5 sq. m (974 sq. ft)
Total lightwell area (approx.) : 14.2 sq. m (153 sq. ft)