



## Gloucester Place, W1U

£692 Per week

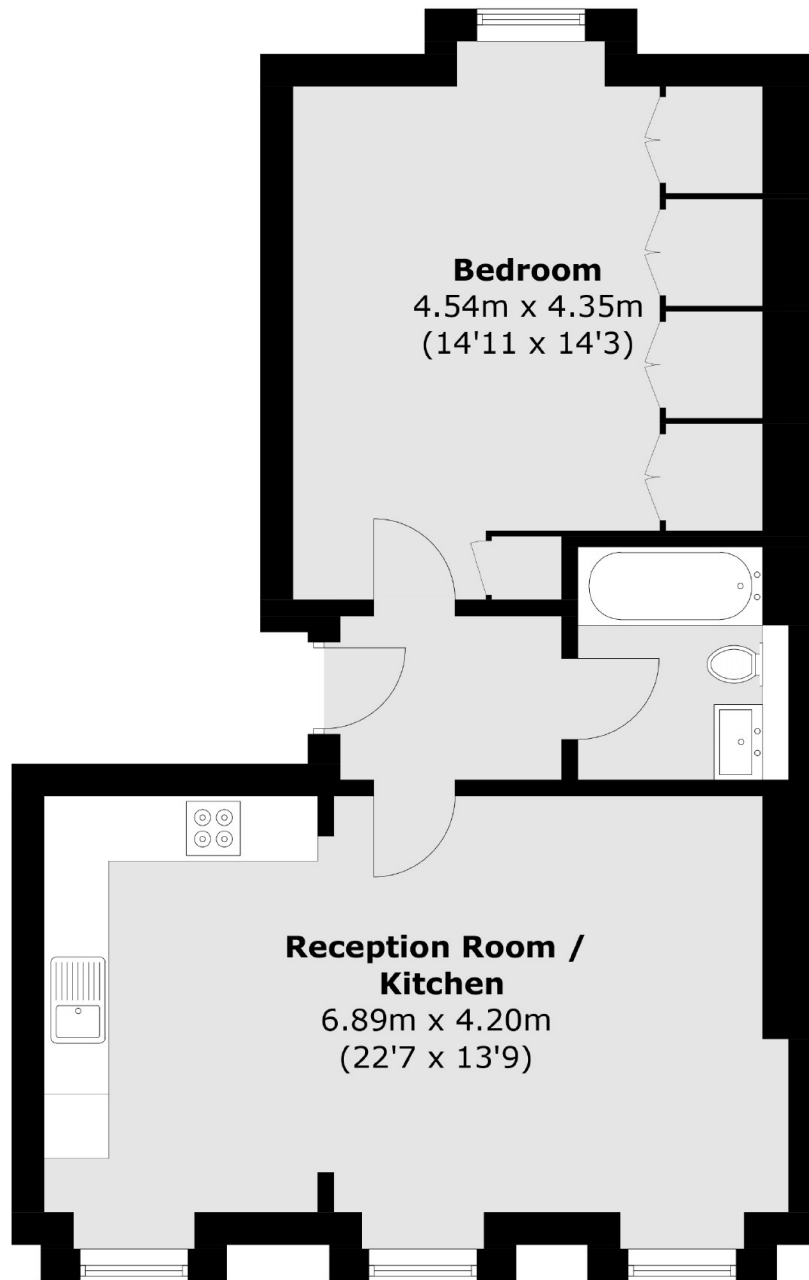
This one bedroom apartment is on the second floor of this attractive townhouse conversion. The flat has an open-plan kitchen/reception room with high ceilings, double bedroom with built-in storage, and bathroom.

Gloucester Place is just north of Dorset Square and is close to the cafe's, shops and restaurants of Baker Street, as well as the fashionable Marylebone High Street.

### Features

- Second Floor
- One Double Bedroom
- Kitchen/Reception
- Owned and Managed by The Portman Estate
- Complimentary Membership to Portman Concierge

# Gloucester Place, London, W1U



Total area (approx.): 57.8 sq. m (622.1 sq. ft)