



Devonshire Place, W1G

£1,600,000

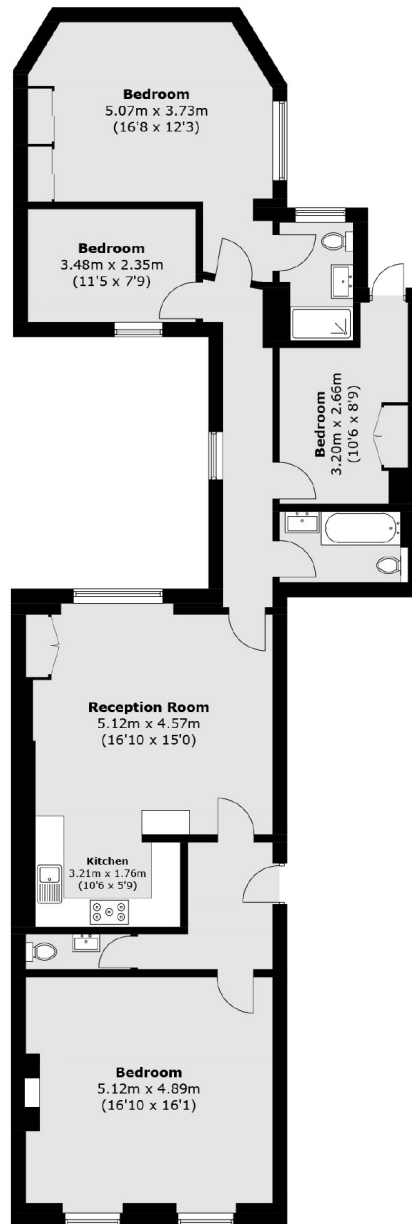
A beautifully proportioned three-bedroom, two-bathroom flat featuring a grand reception room, set within an elegant Grade II listed Georgian townhouse on Devonshire Place.

Ideally located moments from the boutiques and cafés of Marylebone High Street, the open green spaces of Regent's Park, and excellent transport links from nearby stations.

Features

- Three Bedrooms
- Two Bathrooms
- Kitchen-Dining Room
- Reception Room
- Grade II Listed
- Lease to 2168

Devonshire Place, London, W1G



Ground Floor

Total area (approx.): 120.6 sq. m (1,298.1 sq. ft)