



Marylebone Road, NW1

£2,492 Per week

A well-presented four bedroom apartment on the first floor of this portered mansion building close to Regent's Park.

Harley House is a substantial Edwardian gated mansion block just moments from the beautiful open spaces of Regent's Park and the array of boutique shops, bars and restaurants of Marylebone Village. There are superb transport links including Regent's Park, Baker Street and Great Portland Street which are all close by.

Features

- Substantial Mansion Block
- 24 Hour Porterage
- Two Reception Rooms
- Separate Kitchen
- Four Bedrooms
- Three Bathrooms



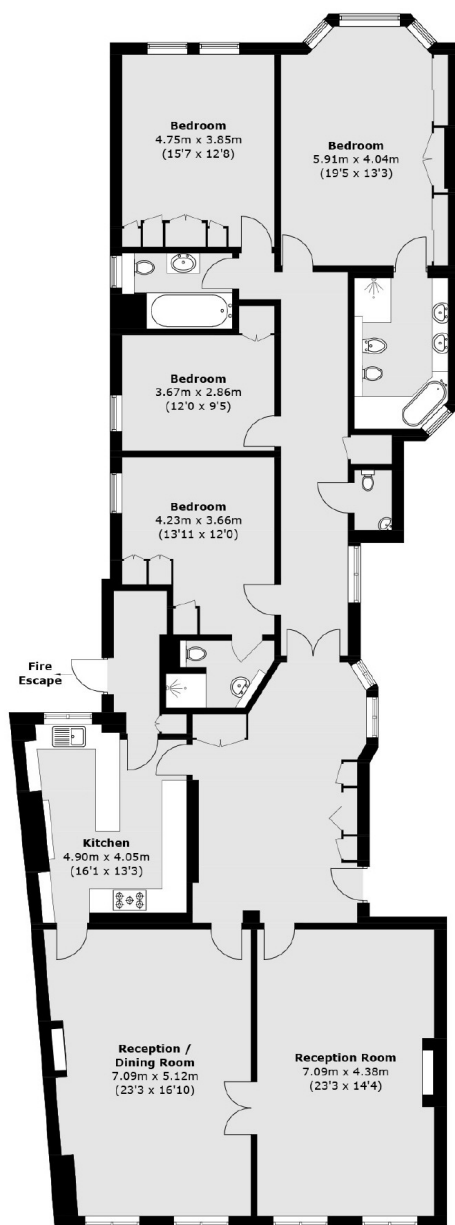
Marylebone Road, NW1

Upon entering the apartment you have a spacious and grand entrance hallway which leads through to the two reception rooms. The kitchen/breakfast room can be accessed via both the reception and hallway.

All four bedrooms are double rooms (two en suite) and there is a guest WC and family bathroom off the hallway.



Marylebone Road, London, NW1



First Floor

Total area (approx.): 227.7 sq. m (2,450.9 sq. ft)