



## Shroton Street, NW1

£530 Per week

This one bedroom apartment is situated in an attractive red brick mansion block close to Marylebone station. The property has high ceilings, a double bedroom overlooking the communal courtyard, open-plan kitchen/reception room and bathroom.

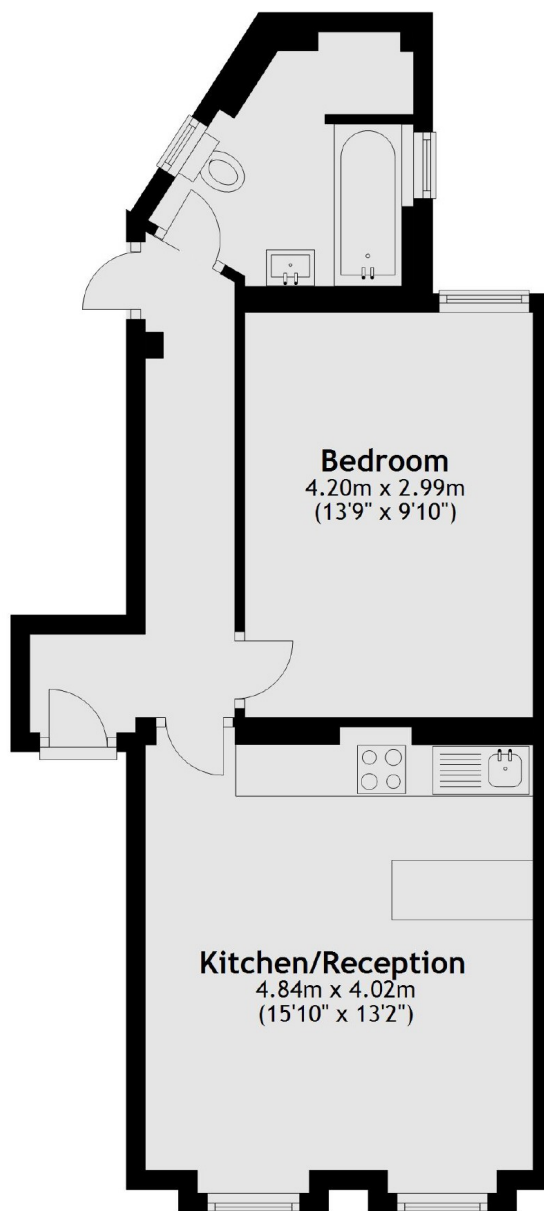
Cosway Mansions is located at the junction of Cosway Street and Shroton Street, with easy access to Baker Street, Marylebone and Edgware Road stations. The open spaces of Regent's Park are within easy reach.

### Features

- Lower Ground Floor
- Kitchen/Reception
- Double Bedroom
- Bathroom
- High Ceilings
- Wood Flooring

**Shroton Street,  
London, NW1**

**Lower Ground Floor**



**Total area: approx. 44.4 sq. metres (477.4 sq. feet)**

**Dexters**

Marylebone  
53-55 Weymouth Street  
London  
W1G 8NJ  
Lettings  
0207 224 5545

Energy Rating: C. We aim to make our particulars both accurate and reliable. However they are not guaranteed; nor do they form part of an offer or contract. If you require clarification on any points then please contact us, especially if you're traveling some distance to view. Please note that appliances and heating systems have not been tested and therefore no warranties can be given as to their good working order.

 **RICS** | Regulated  
Estate Agent  
and Letting Agent

[dexters.co.uk](https://www.dexters.co.uk)