



Crawford Street, W1H

£375 Per week

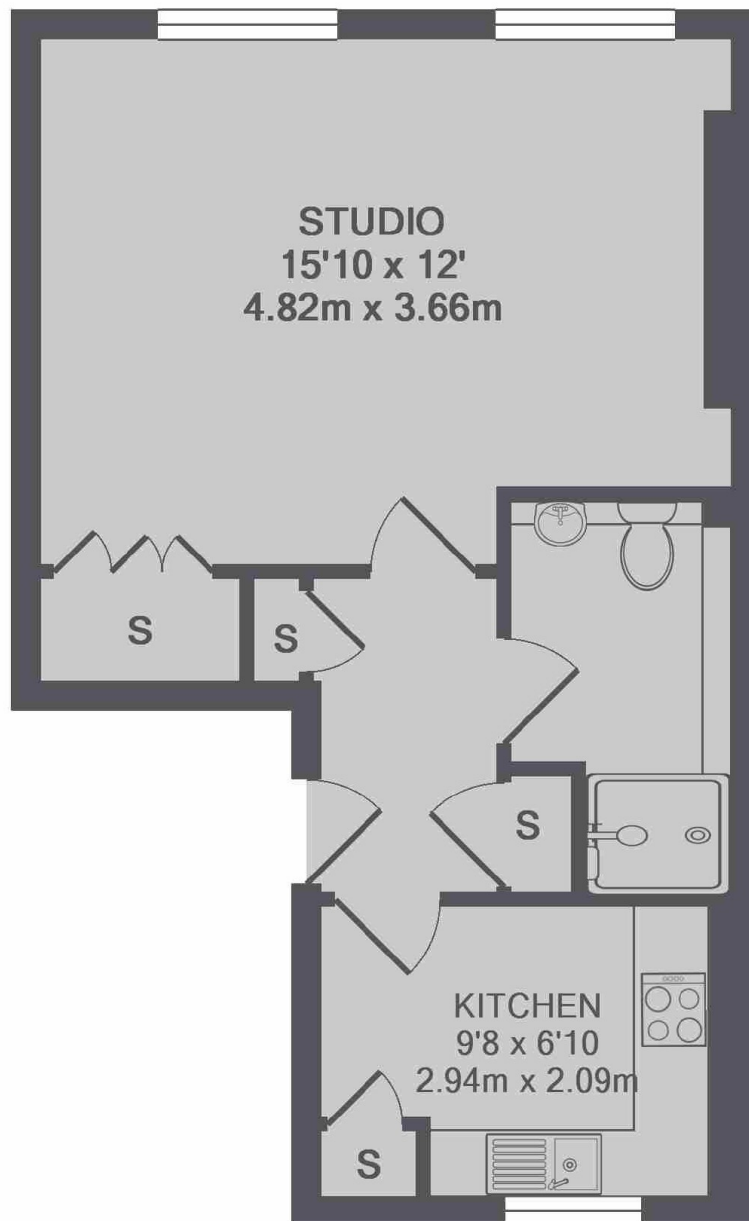
This newly refurbished studio apartment is in a period building close to Marylebone High Street, with wood flooring, a modern fitted kitchen and separate shower room.

Crawford Street is close to Bond Street, Marylebone and Baker Street underground stations, whilst the fashionable Marylebone High Street is nearby.

Features

- Studio Apartment
- Separate Bathroom
- Modern Kitchen
- Owned and Managed by The Portman Estate
- Complimentary Membership to Portman Concierge

Crawford Street,
London, W1H



TOTAL APPROX. FLOOR AREA 342 SQ.FT. (31.8 SQ.M.)

Dexters

Marylebone
53-55 Weymouth Street
London
W1G 8NJ
Lettings
0207 224 5545

Energy Rating: D. We aim to make our particulars both accurate and reliable. However they are not guaranteed; nor do they form part of an offer or contract. If you require clarification on any points then please contact us, especially if you're traveling some distance to view. Please note that appliances and heating systems have not been tested and therefore no warranties can be given as to their good working order.

 **RICS** | Regulated
Estate Agent
and Letting Agent

[dexters.co.uk](https://www.dexters.co.uk)