



George Street, W1U

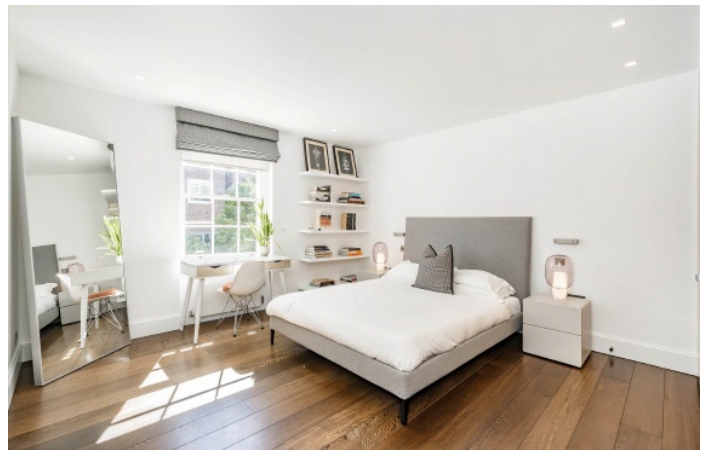
£1,500,000

A beautifully presented contemporary two-bedroom, two-bathroom apartment in the heart of Marylebone. This turnkey home offers a bright open-plan living space, thoughtfully styled interiors, and modern finishes throughout perfect for effortless city living

Located moments from the world-class shopping, dining, and cultural attractions of Marylebone. Bond Street and Baker Street Stations are nearby.

Features

- Two Double Bedrooms
- Two Shower Rooms
- Dual Aspect Living
- Lease 125 from 2000
- Wood Floors
- Built in Storage



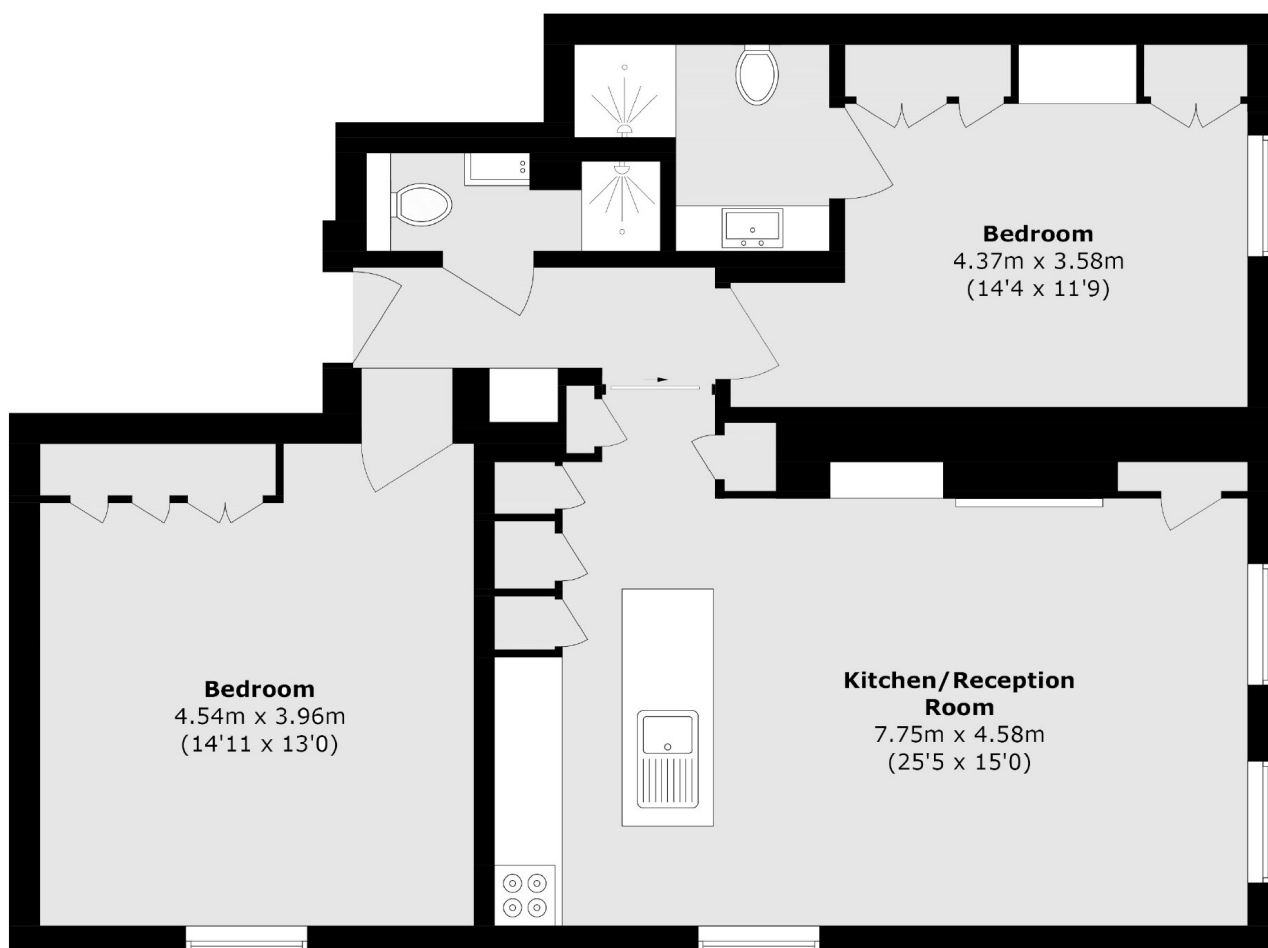
George Street, W1U

The property boasts a bright open-plan reception and kitchen, where expansive windows flood the space with natural light. The sleek interiors are finished to a high contemporary standard, blending comfort with sophistication.

Both bedrooms are generously proportioned, with bespoke storage and elegant en-suites providing a sense of calm retreat. The second bathroom adds further convenience, making the apartment ideal for both residents and guests.



George Street, London, W1U



Total area (approx.): 88.9 sq. m (956.9 sq. ft)

Dexters

Marylebone
53-55 Weymouth Street
London
W1G 8NJ
Sales
020 7224 5544

Energy Rating: TBC. We aim to make our particulars both accurate and reliable. However they are not guaranteed; nor do they form part of an offer or contract. If you require clarification on any points then please contact us, especially if you're traveling some distance to view. Please note that appliances and heating systems have not been tested and therefore no warranties can be given as to their good working order.

 **RICS** | Regulated
Estate Agent
and Letting Agent

[dexters.co.uk](https://www.dexters.co.uk)