



**Brendon Street, W1H**

**£1,269** Per week

**Dexters**



## Brendon Street, W1H

A well-presented three double bedroom family house in Marylebone with wood flooring throughout, a patio garden to the rear and a roof top terrace.

Entering the house on the ground floor you are greeted with a reception room with stairs that lead to the rear garden. On the lower floor is an open plan kitchen/diner, guest WC and access to dry vault storage.

To the first floor is a spacious master bedroom with en suite bathroom and a separate family bathroom. There are two further double bedrooms on the second floor and stairs that lead to a rooftop terrace.

Brendon Street is located to the West of Marylebone, within close proximity to Edgware Road and Marble Arch tube stations. The wide open spaces of Hyde Park are also nearby.

Located to the West of Marylebone, within close proximity to Edgware Road and Marble Arch tube stations.

### Features

- Three Bedrooms
- Two Bathrooms
- Roof Terrace
- Patio Garden
- Eat-In Kitchen
- Reception/Dining Room







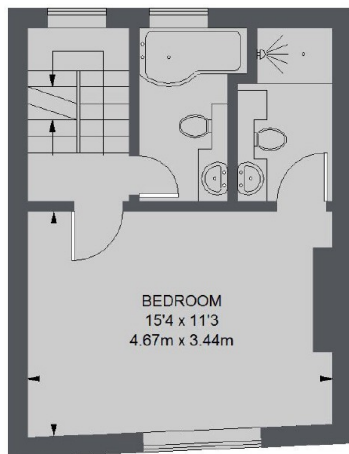




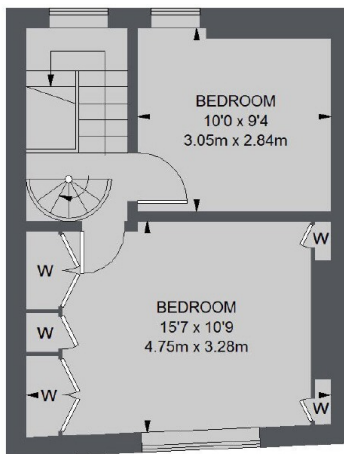




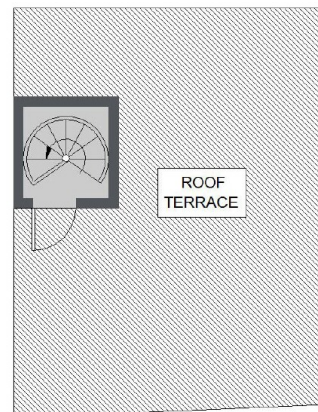
# Brendon Street, London, W1H



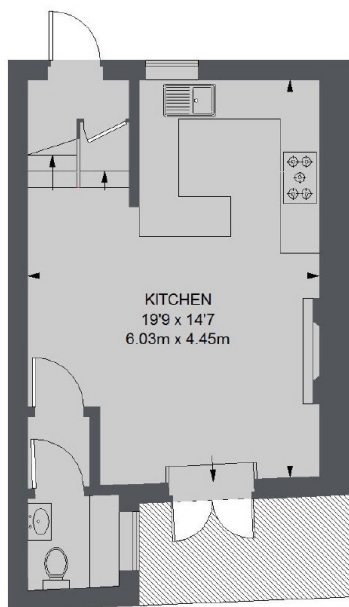
FIRST FLOOR



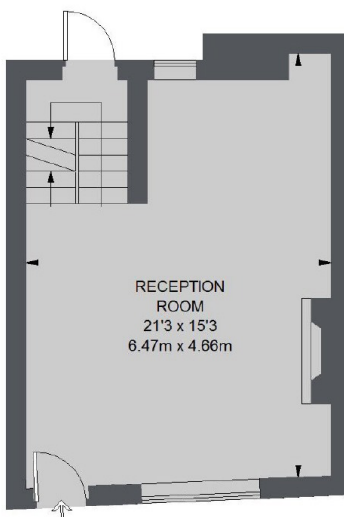
SECOND FLOOR



ROOF TERRACE



LOWER GROUND FLOOR



GROUND FLOOR

TOTAL APPROX. FLOOR AREA 1277 SQ. FT. (118.61 SQ. M.)

## Dexters

Marylebone  
53-55 Weymouth Street  
London  
W1G 8NJ  
Lettings  
0207 224 5545

Energy Rating: D. We aim to make our particulars both accurate and reliable. However they are not guaranteed; nor do they form part of an offer or contract. If you require clarification on any points then please contact us, especially if you're traveling some distance to view. Please note that appliances and heating systems have not been tested and therefore no warranties can be given as to their good working order.

**RICS** Regulated  
Estate Agent  
and Letting Agent

dexters.co.uk