



Gloucester Place, W1U

£1,595 Per week

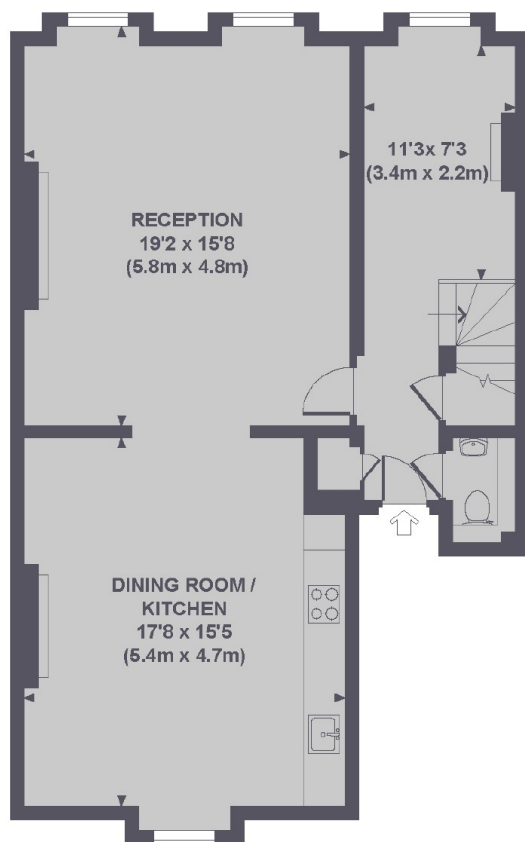
This three bedroom apartment is on the second and third floors of a period conversion on Gloucester Place. The flat has a large reception room with superb natural light, a separate modern kitchen, three bedrooms with built-in storage and two bathrooms.

Gloucester Place offers easy access to the boutique shops and amenities of Marylebone and St. John's Wood, along with the open green spaces of Regent's Park & Hyde Park are also nearby. Transport links are available from both Marylebone Station and Baker Street Underground Station too.

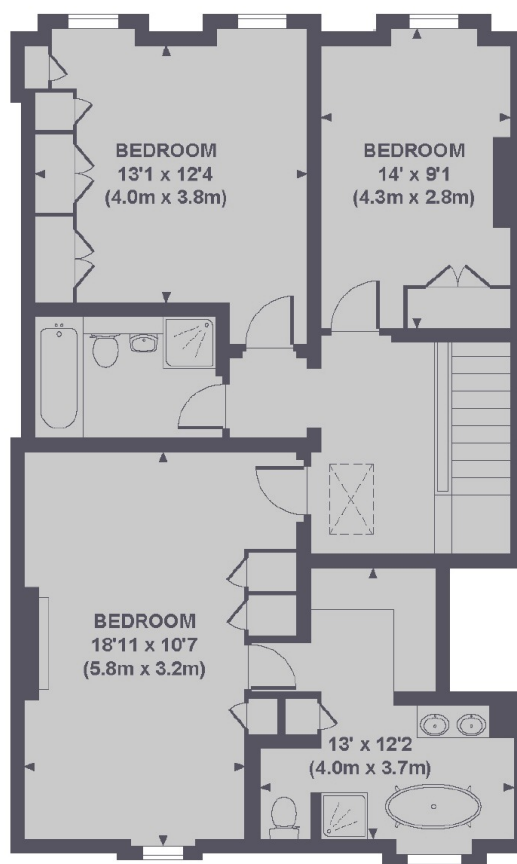
Features

- Duplex Apartment
- Large Reception
- Wood Flooring
- Study Area
- Ample Storage
- High Ceilings

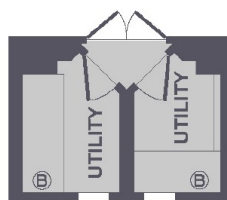
Gloucester Place, London, W1U



SECOND FLOOR



THIRD FLOOR



FIRST FLOOR
HALF LANDING

Approx. gross internal area 1632 Sq Ft. / 151.8 Sq M.

Dexters

Marylebone
53-55 Weymouth Street
London
W1G 8NJ
Lettings
0207 224 5545

Energy Rating: B. We aim to make our particulars both accurate and reliable. However they are not guaranteed; nor do they form part of an offer or contract. If you require clarification on any points then please contact us, especially if you're traveling some distance to view. Please note that appliances and heating systems have not been tested and therefore no warranties can be given as to their good working order.

 **RICS** | Regulated
Estate Agent
and Letting Agent

[dexters.co.uk](https://www.dexters.co.uk)