



## Crawford Street, W1U

£750,000

A two double bedroom modern apartment with a private roof terrace providing outdoor recreation space. Central Marylebone location with a long lease.

Located a short distance from Baker Street Station, Regents Park and Marylebone High Street.

### Features

- Two Double Bedrooms
- Reception Room
- Separate Kitchen
- Lease 999 years from 1994
- Private Outdoor Space
- First Floor

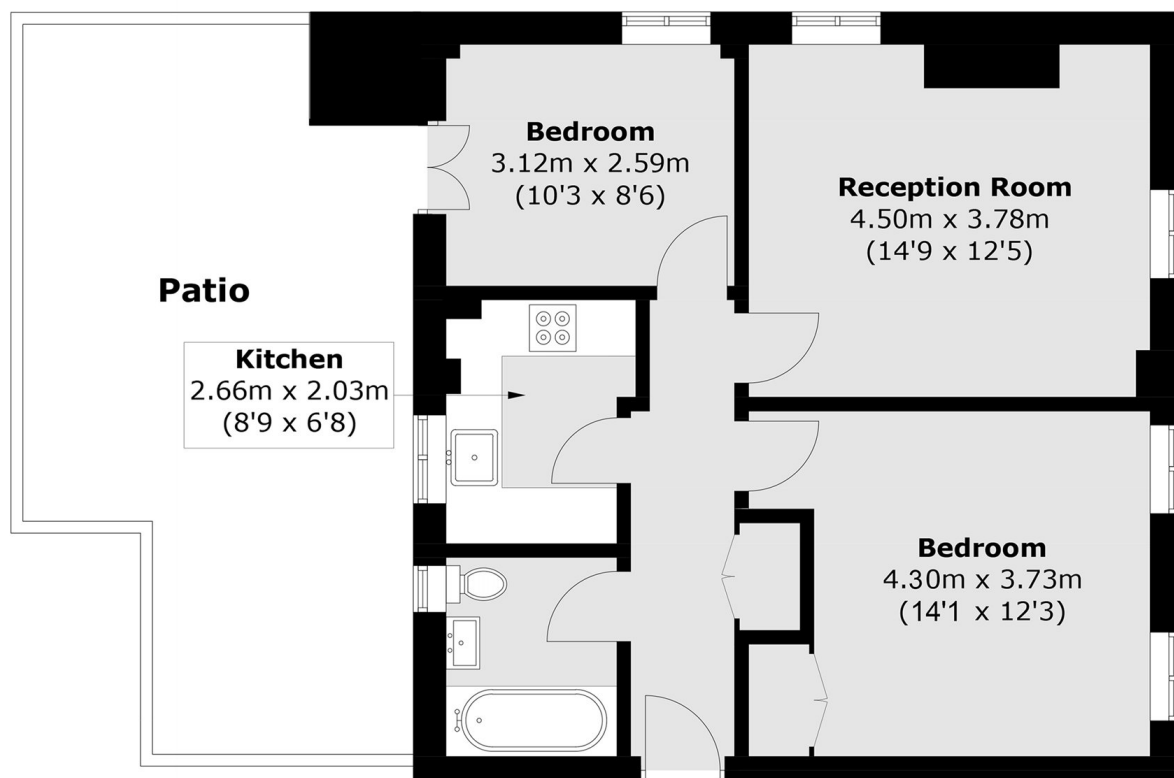


## Crawford Street, W1U

The apartment has two bedrooms with the main bedroom having a built in wardrobe and southerly facing aspect, the second bedroom opens to the terrace, the reception room has adequate space to dine. There is a modern kitchen and bathroom and a large cupboard in the hallway.



# Crawford Street, London, W1U



Total area (approx.): 57.9 sq. m (623.2 sq. ft)  
Patio area (approx.): 19.5 sq. m (209.9 sq. ft)