



Crawford Street, W1U

£750,000

A two double bedroom modern apartment with a private roof terrace providing outdoor recreation space. Central Marylebone location with a long lease.

Located a short distance from Baker Street Station, Regents Park and Marylebone High Street.

Features

- Two Double Bedrooms
- Reception Room
- Separate Kitchen
- Lease 999 years from 1994
- Private Outdoor Space
- First Floor

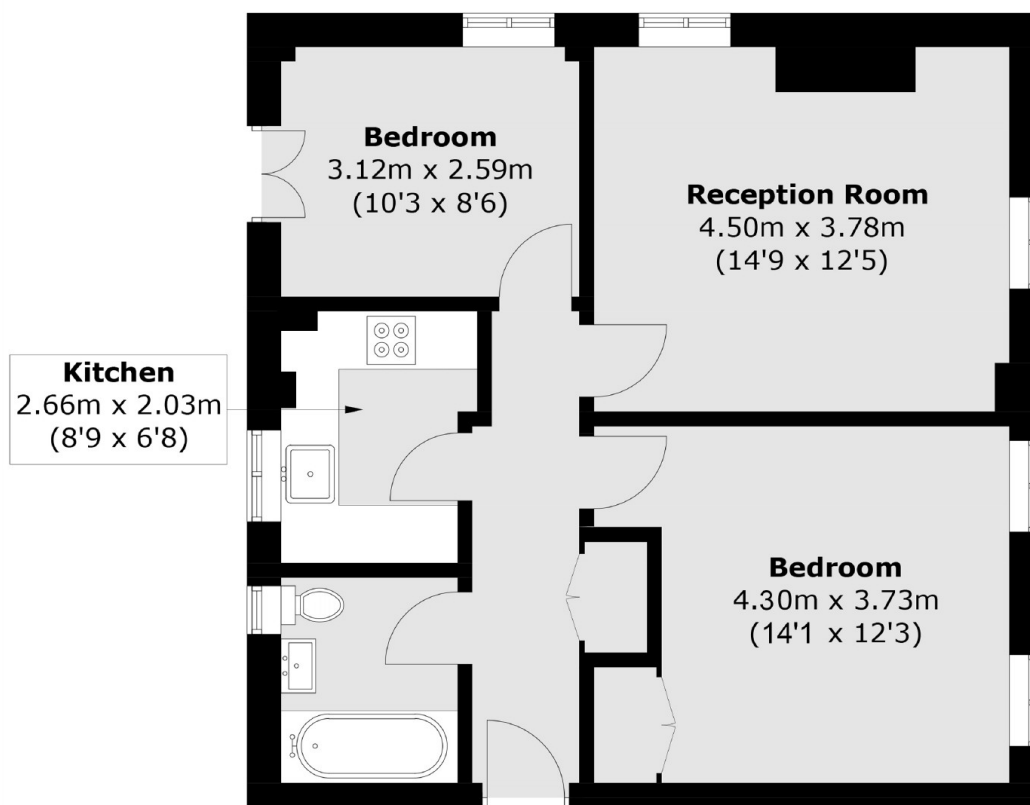


Crawford Street, W1U

The apartment has two bedrooms with the main bedroom having a built in wardrobe and southerly facing aspect, the second bedroom opens to the terrace, the reception room has adequate space to dine. There is a modern kitchen and bathroom and a large cupboard in the hallway.



Crawford Street, London, W1U



Total area (approx.): 57.9 sq. m (623.2 sq. ft)

Dexters

Marylebone
53-55 Weymouth Street
London
W1G 8NJ
Sales
020 7224 5544

Energy Rating: C. We aim to make our particulars both accurate and reliable. However they are not guaranteed; nor do they form part of an offer or contract. If you require clarification on any points then please contact us, especially if you're traveling some distance to view. Please note that appliances and heating systems have not been tested and therefore no warranties can be given as to their good working order.

 **RICS** | Regulated
Estate Agent
and Letting Agent

[dexters.co.uk](https://www.dexters.co.uk)