



Park Crescent Mews East, W1W

£2,000,000

A four bedroom mews home in a secure gated mews located South of Regents Park. Residents can subscribe to use the private Park Square Gardens nearby.

Close to Regents Park, Marylebone High Street and the underground stations of Great Portland Street, Regents Park and Baker Street. The main line stations at Euston and Kings Cross are a short cab ride away.

Features

- Four Bedrooms
- Two Bathrooms
- Reception - Dining Room
- Garage & Utility
- Gated Mews Location

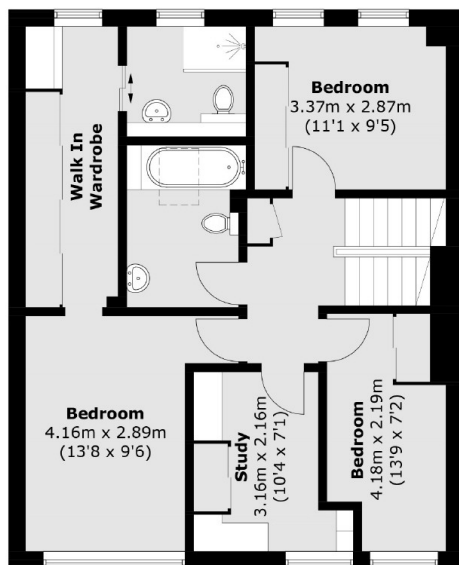


Park Crescent Mews East, W1W

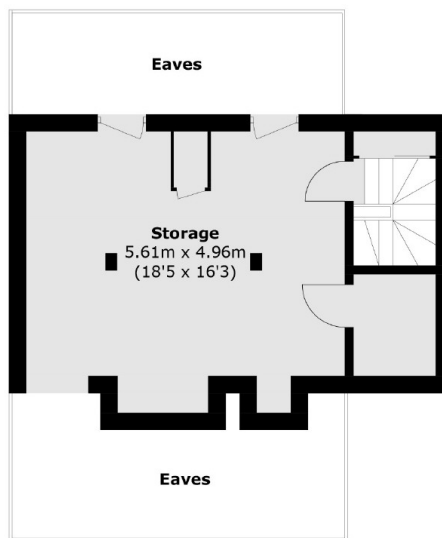
The ground floor comprises an integral garage and utility room, the first floor has the main living area with an L shaped reception-dining room opening to a balcony, reception room/bedroom, kitchen and guest cloakroom, the second floor has the main bedroom with dressing room and en suite shower room, two further double bedrooms, a study/bedroom and a family bathroom. There is a large loft area which is undemised and provides storage area for the house.



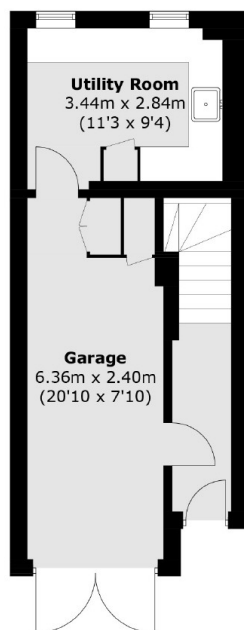
Park Crescent Mews East, London, W1W



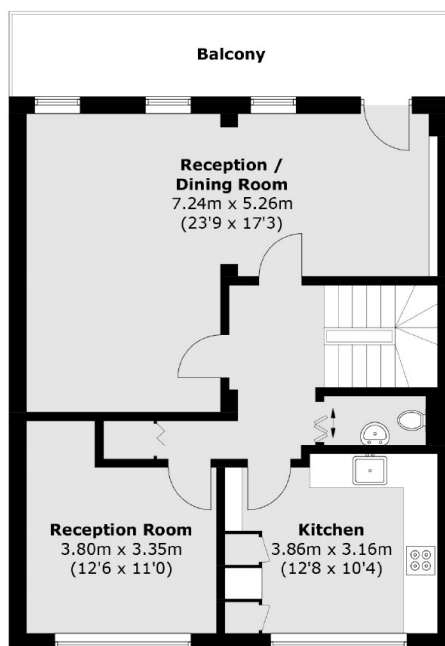
Second Floor



Third Floor



Ground Floor



First Floor

Total area (approx.): 167.4 sq. m (1801.8 sq. ft)
(Excluding Eaves / Storage)
Balcony: 11.2 sq. m (120.5 sq. ft)