



Great Titchfield Street, W1W

£699,950

A two double bedroom apartment located in a characterful Georgian building. Benefits from a central Fitzrovia location and a long lease.

Great Titchfield Street is known for its independent bars, art galleries, cafés, and boutiques. A short walk from Oxford Circus, Regents Street and Regent's Park.

Features

- Two Bedrooms
- Reception Room
- Kitchen - Dining Room
- Bathroom
- Period Building
- Lease 999 years from 2002

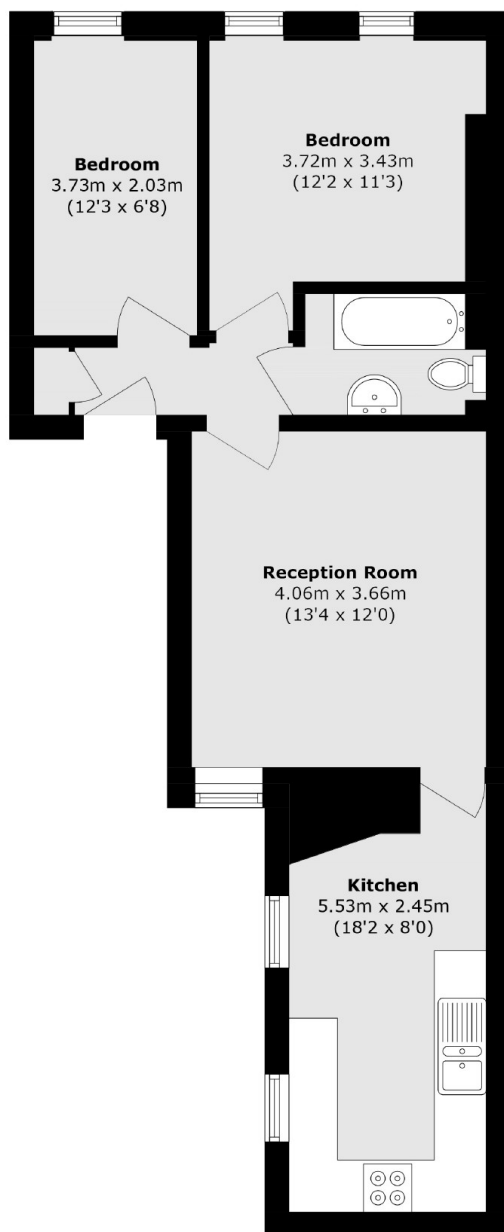


Great Titchfield Street, W1W

The layout includes a spacious reception room, a separate kitchen with space for a dining table, two well-proportioned bedrooms, and a stylish bathroom.



Great Titchfield Street, London, W1W



Total area (approx.): 56.3 sq. m (606.0 sq. ft)