



Great Titchfield Street, W1W

£750,000

A two double bedroom apartment located in a characterful Georgian building. Benefits from a central Fitzrovia location and a long lease.

Great Titchfield Street is known for its independent bars, art galleries, cafés, and boutiques. A short walk from Oxford Circus, Regents Street and Regent's Park.

Features

- Two Bedrooms
- Reception Room
- Kitchen - Dining Room
- Bathroom
- Period Building
- Lease 999 years from 2002

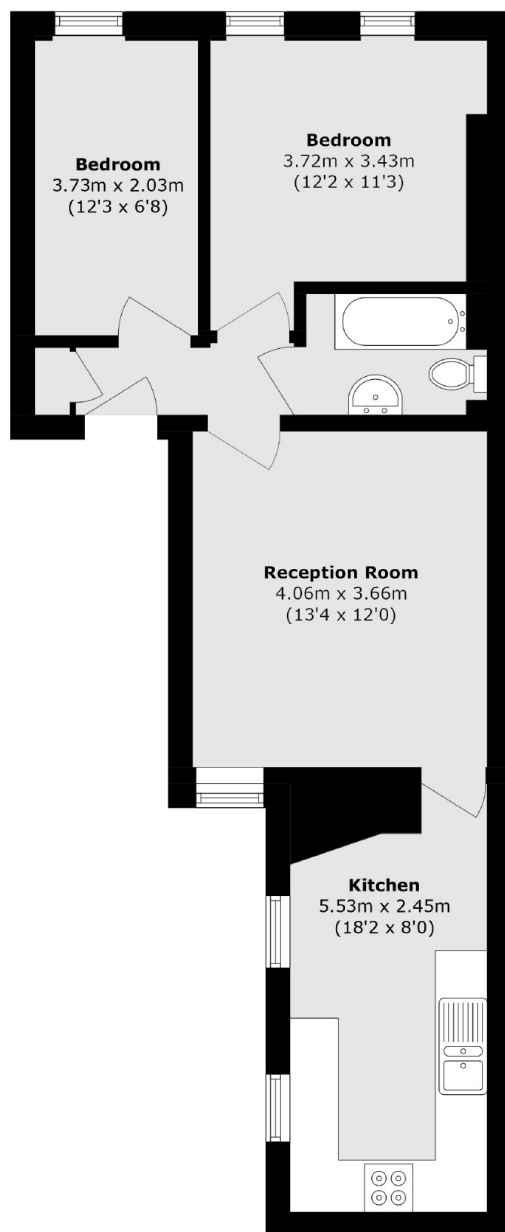


Great Titchfield Street, W1W

The layout includes a spacious reception room, a separate kitchen with space for a dining table, two well-proportioned bedrooms, and a stylish bathroom.



Great Titchfield Street, London, W1W



Total area (approx.): 56.3 sq. m (606.0 sq. ft)

Dexters

Marylebone
53-55 Weymouth Street
London
W1G 8NJ
Sales
020 7224 5544

Energy Rating: D. We aim to make our particulars both accurate and reliable. However they are not guaranteed; nor do they form part of an offer or contract. If you require clarification on any points then please contact us, especially if you're traveling some distance to view. Please note that appliances and heating systems have not been tested and therefore no warranties can be given as to their good working order.

 **RICS** | Regulated
Estate Agent
and Letting Agent

[dexters.co.uk](https://www.dexters.co.uk)