



Pearson Square, W1T

£2,250,000

A three-bedroom apartment situated within the prestigious Pearson Square development. A spacious living area opens to a westerly facing balcony, perfect for enjoying afternoon sun and evening light. On-site amenities, include a gym, private cinema, and 24-hour concierge.

Ideally located for the West End, Regent's Park and The City with transport links at Tottenham Court Road (Elizabeth Line), Oxford Circus, Goodge Street, and Euston.

Features

- Three Bedrooms
- Two Bathrooms
- Two Balconies
- 24 Hour Concierge
- Residents Amenities
- Lease Term 990 From 2015



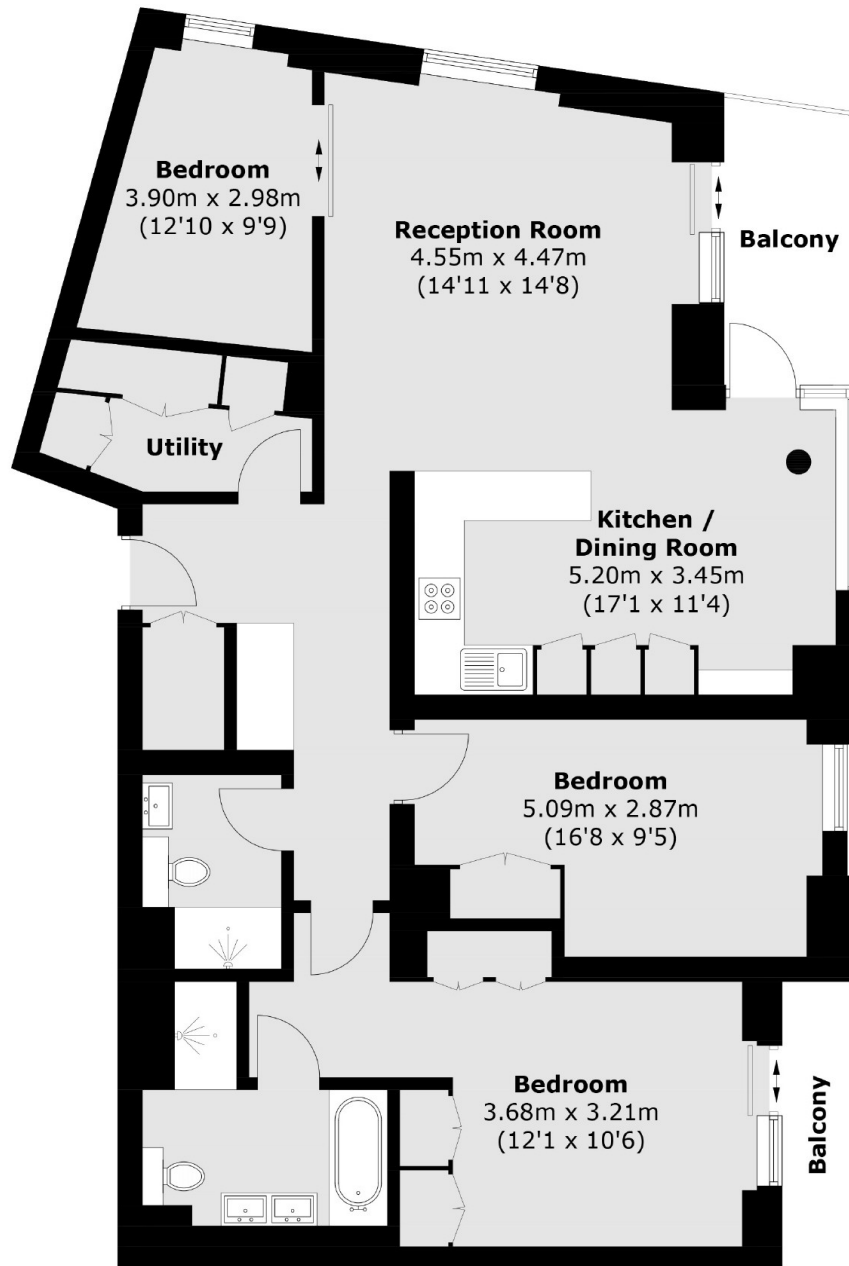
Pearson Square, W1T

The apartment is designed to provide occupants the flexibility of using three bedrooms or two with a study. The bright combined reception and kitchen open to a large west-facing terrace. The principle bedroom suite has built in storage an Ensuite bathroom with additional shower and a private balcony, the second bedroom is a double and there is a separate shower room.

Includes a private storage unit and underground parking space. Residents amenities include 24/7 concierge desk, modern gym, residents lounge, business rooms, and cinema.



Pearson Square, London, W1T



Fourth Floor

Total area (approx.): 111.9 sq. m (1,204.5 sq. ft)
Balcony: 8.5 sq. m (91.5 sq. ft)

Dexters

Marylebone
53-55 Weymouth Street
London
W1G 8NJ
Sales
020 7224 5544

Energy Rating: B. We aim to make our particulars both accurate and reliable. However they are not guaranteed; nor do they form part of an offer or contract. If you require clarification on any points then please contact us, especially if you're traveling some distance to view. Please note that appliances and heating systems have not been tested and therefore no warranties can be given as to their good working order.

 **RICS** | Regulated
Estate Agent
and Letting Agent

[dexters.co.uk](https://www.dexters.co.uk)