



Rossmore Road, NW1

£675,000

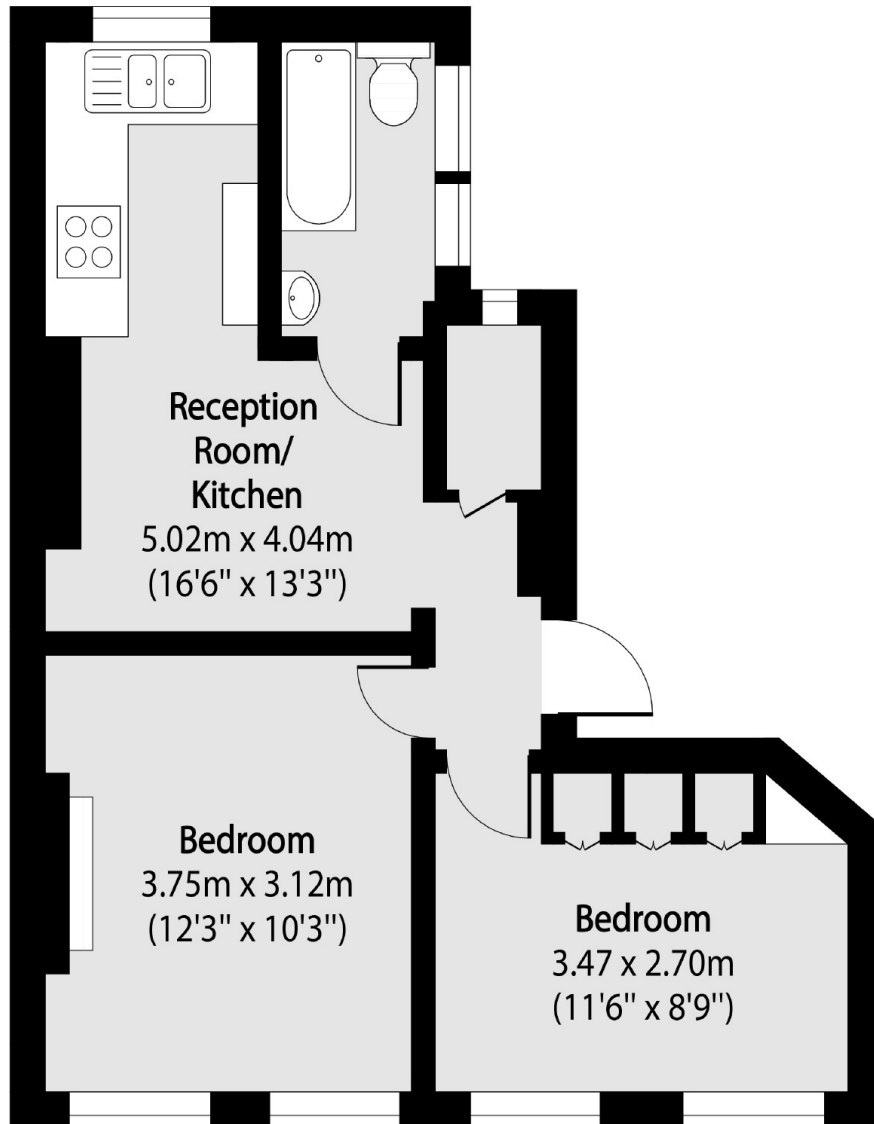
Buy to let investment opportunity. Currently let at £5000.00 per calendar month producing a net yield of 8.89%.

Located close to Baker Street and Marylebone Stations. Regents Park and Marylebone High Street and easily accessible.

Features

Two Double Bedrooms
Reception
Kitchen
Bathroom
Share of Freehold
Investment Return 8.89%
return

Rossmore Road, London, NW1



Total area (approx): 42.03 sq m (452 sq. ft)