

Seymour Street, W1H

£850 Per week

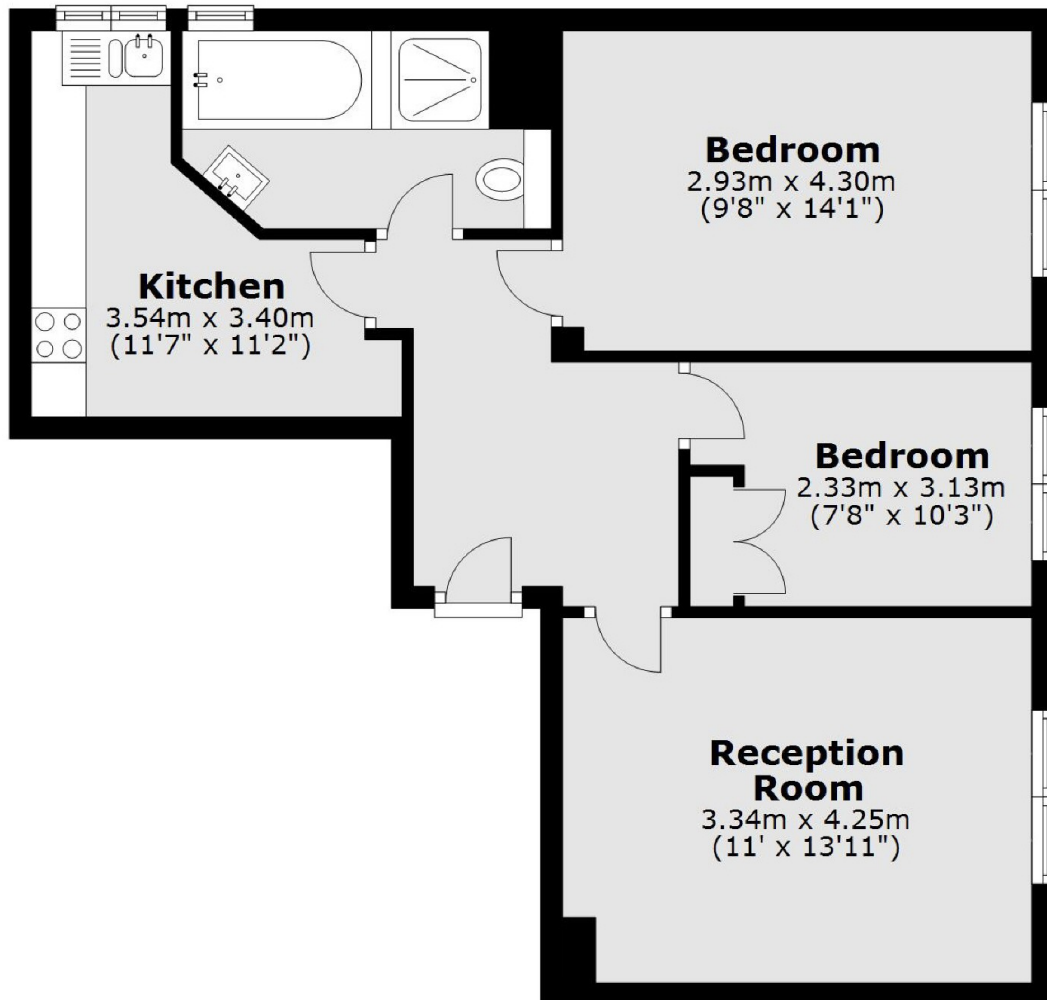
A two bedroom apartment on the second floor of this portered building on Seymour Street. The flat has two double bedrooms with built-in storage, bathroom, reception room and separate kitchen.

Seymour Street sits on the edge of Portman Village which is a favourite for locals, providing a village vibe in the heart of central London. The vibrant shops, bars and restaurants of Marylebone High Street are also within easy reach.

Features

- Portered Building
- First Floor Flat
- Two Bedrooms
- One Bathroom
- Reception Room
- Separate Kitchen

Seymour Street, London, W1H



Total area: approx. 56.8 sq. metres (611.4 sq. feet)