



## Manchester Street, W1U

£692 Per week

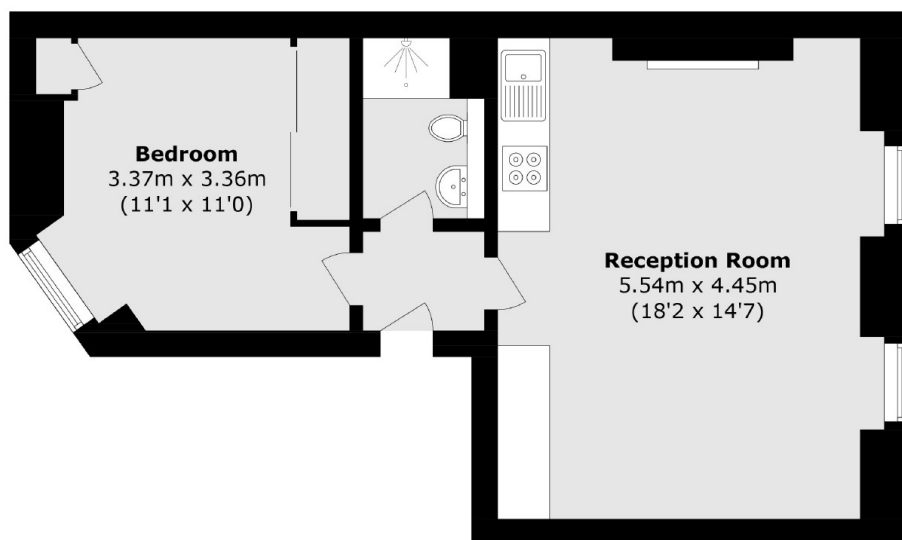
A modern one bedroom apartment on the second floor of this Georgian townhouse in the heart of Marylebone Village. The property has an open-plan kitchen/reception room, double bedroom and bathroom.

Manchester Street is in the centre of Marylebone Village with Chiltern Firehouse on your doorstep. Bond Street Station is half a mile away.

### Features

- One Bedroom
- One Bathroom
- Modern
- Second Floor
- Built-In Storage
- The Portman Estate

# Manchester Street, London, W1U



Total area (approx.): 42.1 sq. m (453.1 sq. ft)