



**Portland Place, W1B**

**£2,653** Per week

**Dexters**



## Portland Place, W1B

Arranged over two floors with substantial living space is this beautifully presented three bedroom, three bathroom apartment on Portland Place.

The flat is newly decorated throughout and has a large reception room leading through to the separate eat-in kitchen which has modern built-in appliances and kitchen island.

There are two further reception rooms on the ground floor; the reception room has a double aspect which provides superb natural light and leads through to the dining room.

The principal bedroom has a three piece en suite and a walk-in dressing room, there are two further double bedrooms with built-in storage and en suite bath/shower rooms, and a guest WC off the hallway.

Portland Place is a sought after location which runs between Park Crescent and Regent Street. The open spaces of Regent's Park are on your doorstep and the shops, bars, cafes and restaurants of Marylebone, Fitzrovia and Mayfair are within easy reach. The property is close to a number of stations, including Baker Street, Marylebone, Great Portland Street and Oxford Circus to name a few.

### Features

- Portered Building
- Close To Regent's Park
- Three En Suite Bedrooms
- Eat-In Kitchen
- Three Reception Rooms
- Fully Furnished









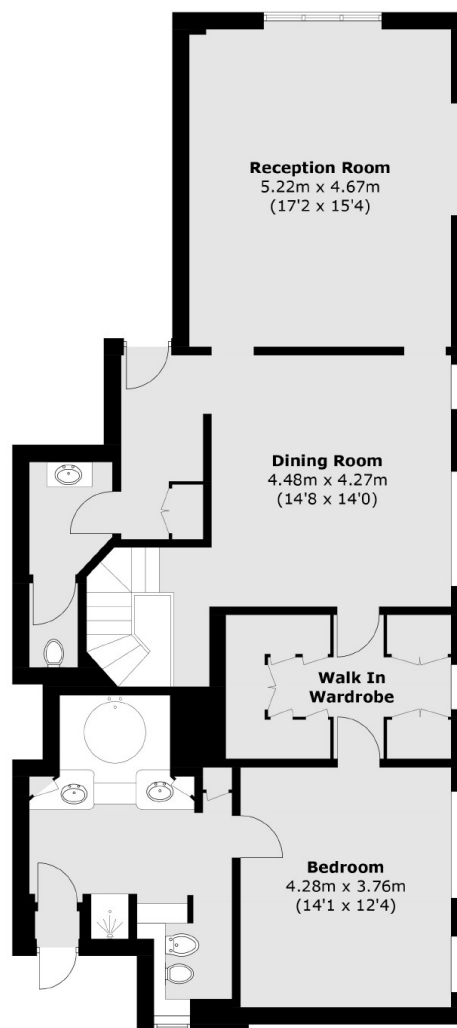




# Portland Place, London, W1B



**Lower Ground Floor**



**Ground Floor**

Total area (approx.): 220.4 sq. m (2,372.3 sq. ft)