



## Weymouth Street, W1G

### £1,800,000

A two double bedroom top floor apartment with an enviable dual aspect. Set in a period building with two lifts, day porter and long lease.

Located one block from Marylebone High Street.  
Moments from Bond Street Station and Regents Park.

### Features

Two Double Bedrooms  
Reception - Dining Room  
Top Floor  
Bathroom  
Leasehold 999 from 2011  
Day Porter and Two Lifts



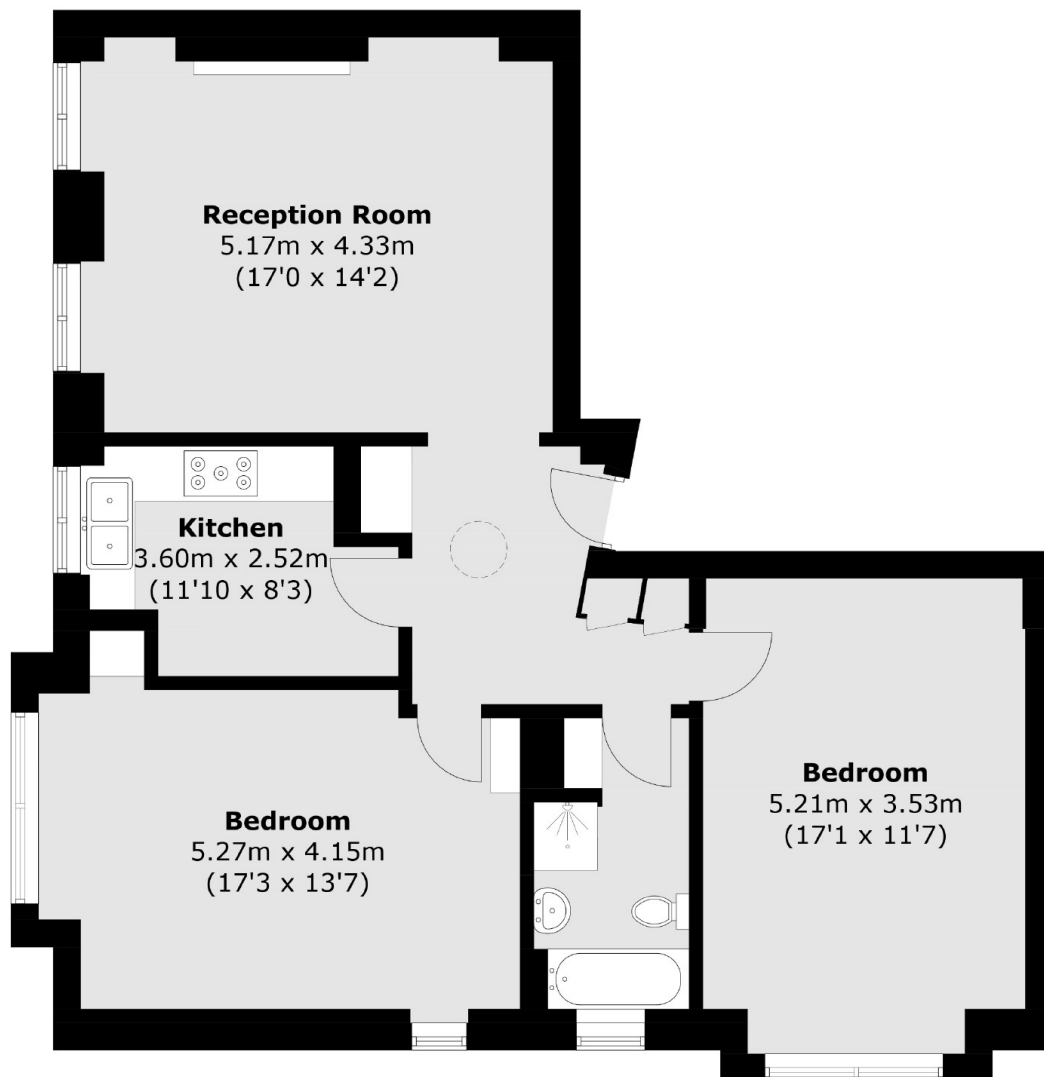
## Weymouth Street, W1G

The entrance hall has circular skylight lending light to the area which opens to the combined reception - dining room with a gas fire place and two leaded light windows, there is a separate kitchen, both bedrooms are doubles, one has a dual aspect overlooking Weymouth and Marylebone Street's and the other Marylebone Street. The rooms have attractive Karndean Herringbone flooring.

The service charge covers heating and hot water, block insurance, building maintenance and the day porter.



# Weymouth Street, London, W1G



## Fifth Floor

Total area (approx.): 82.7 sq. m (890.1 sq. ft)