



Blandford Street, W1U

£1,150 Per week

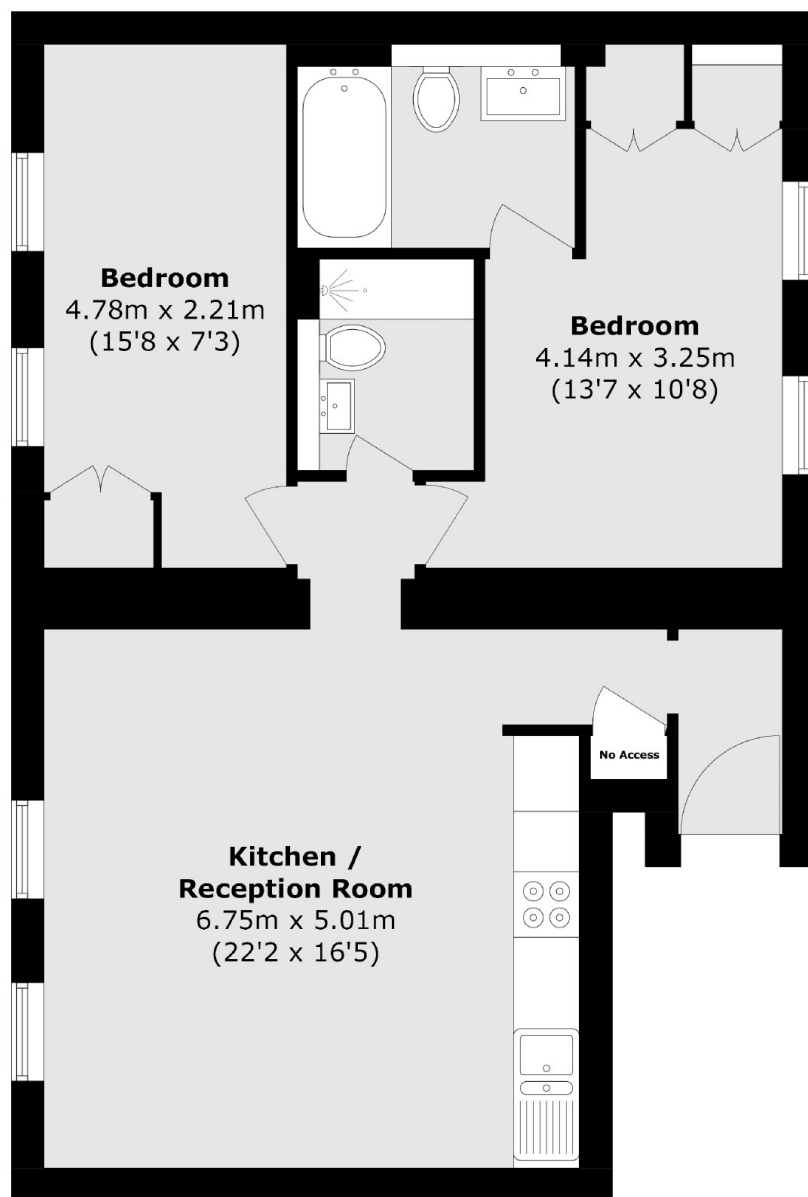
A modern two bedroom, two bathroom apartment on the first floor of an attractive conversion in the heart of Marylebone. The flat has an open-plan kitchen/reception room, two bedrooms and two bathrooms.

Blandford Street is in the heart of Marylebone Village with the boutique shops, bars and restaurants of Marylebone High Street a short walk away. Bond Street and Baker Street stations are close by.

Features

- First Floor
- Two Bedrooms
- Two Bathrooms
- Owned and Managed by The Portman Estate
- Complimentary Membership to Portman Concierge

Blandford Street, London, W1U



Total area (approx.): 62.5 sq. m (672.7 sq. ft)
(Excluding 'No Access')