



Marylebone Road, NW1

£650,000

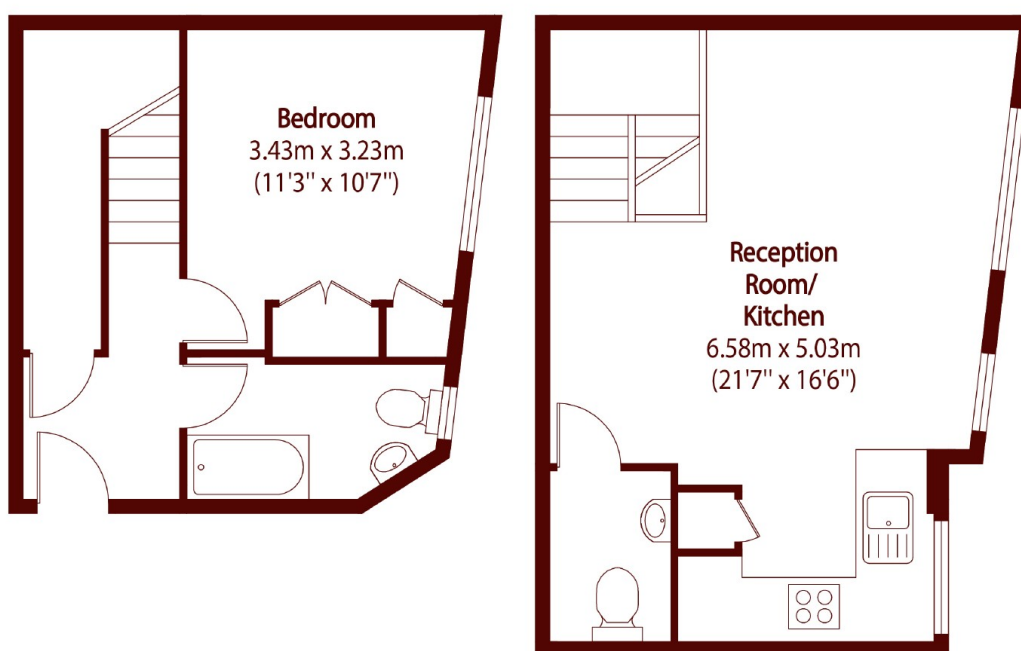
A one bedroom apartment arranged over two floors overlooking a patio courtyard. Set within a low build complex with uniformed porters and residents gym.

Located close to Baker Street Station, Regents Park and Marylebone High Street.

Features

- Lease 999 from 1997
- Courtyard Patio
- Porter 24-7
- Air Conditioning
- Overlooks Quiet Courtyard

Marylebone Road, London, NW1



Ground Floor

First Floor

Total area (approx): 53.07 sq m (571 sq. ft)