

Seymour Street, W1H

£620 Per week

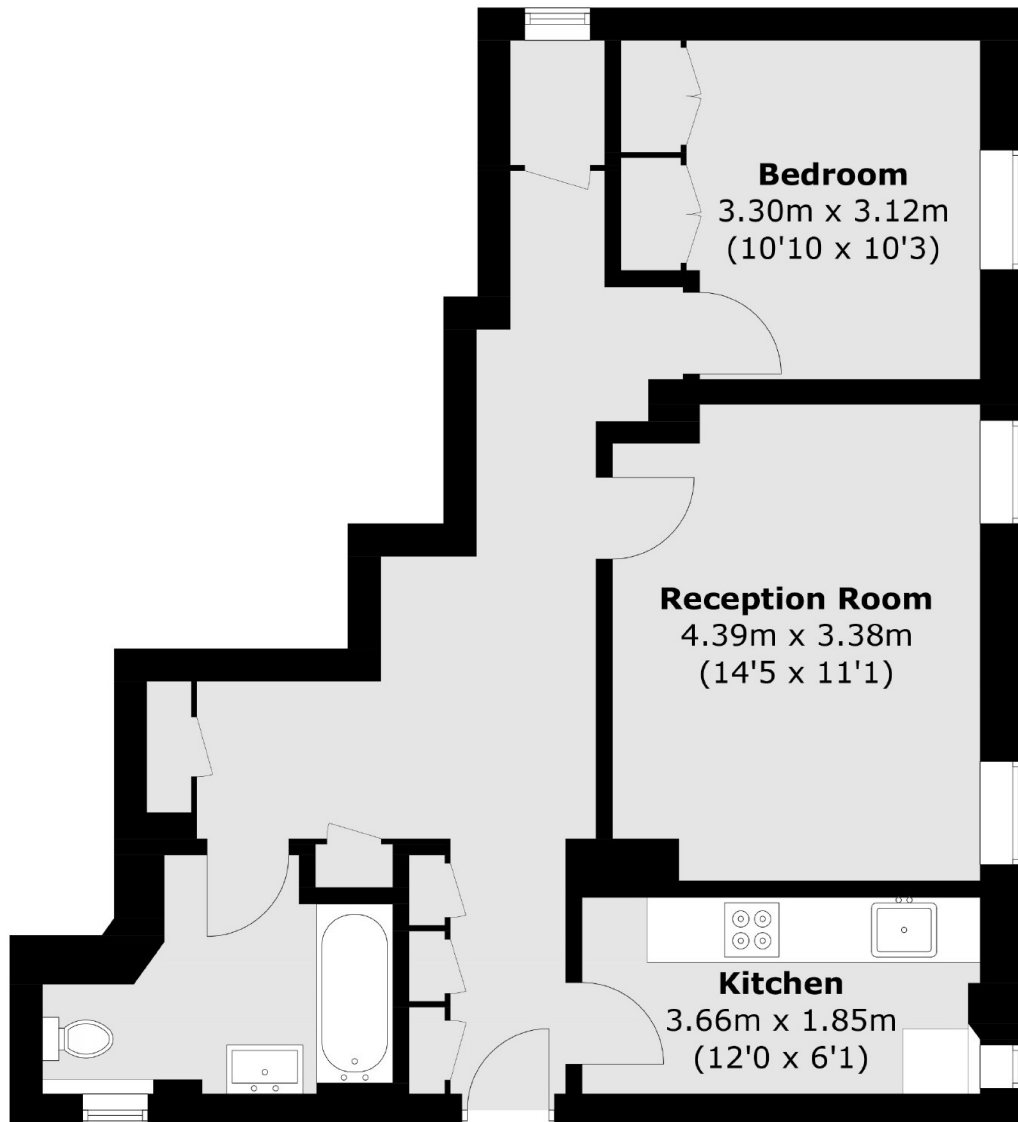
This modern one bedroom apartment is on the lower ground floor of this portered block close to Marble Arch. The flat has a reception room, separate kitchen, double bedroom with built-in storage and a bathroom.

Seymour Street sits on the edge of Portman Village which is a favourite for locals, providing a village vibe in the heart of central London. The vibrant shops, bars and restaurants of Marylebone High Street are also within easy reach.

Features

- Portered Building
- One Bedroom
- One Bathroom
- Separate Kitchen
- Modern Specification

Seymour Street, London, W1H



Lower Ground Floor

Total area (approx.): 57.4 sq. m (617.8 sq. ft)