



Great Portland Street, W1W

£1,350,000

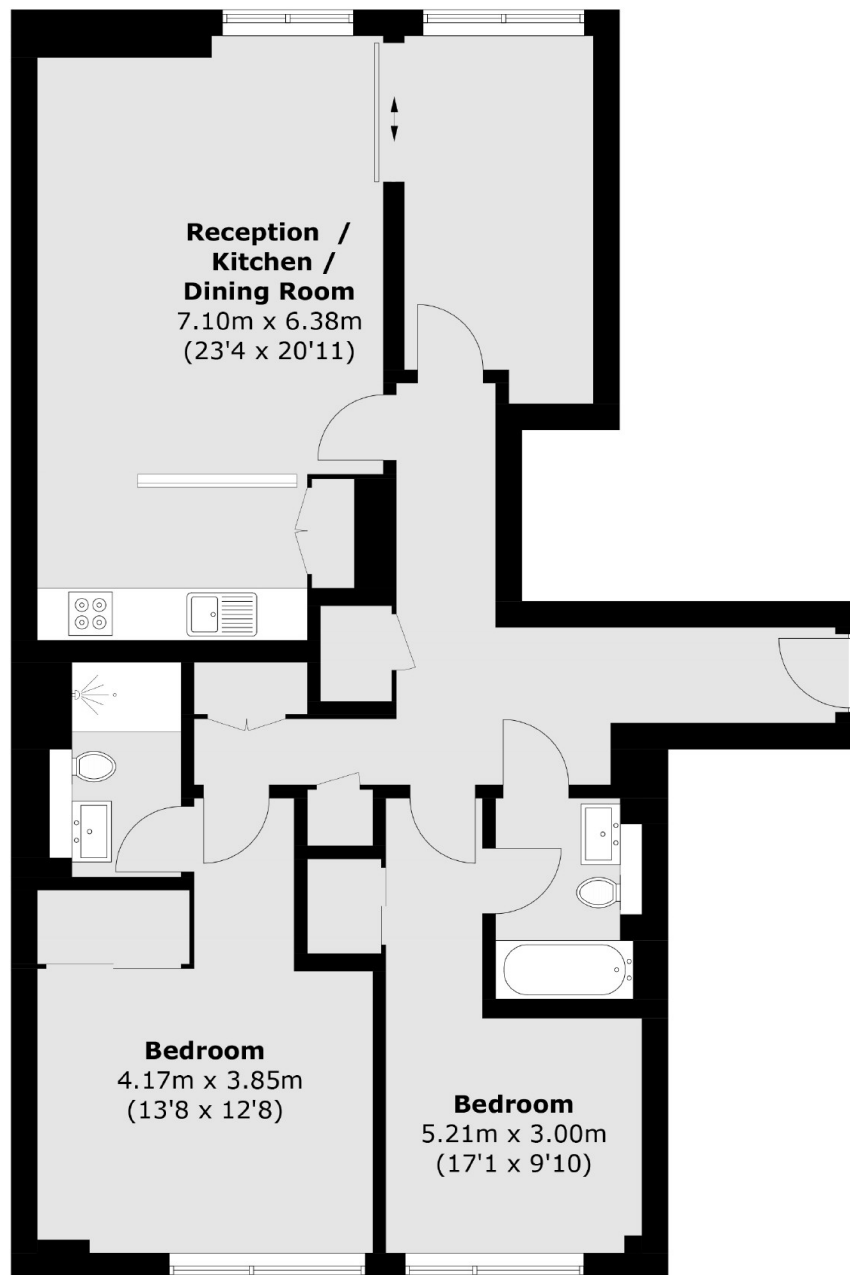
A modern two bedroom, two bathroom apartment with a bright open plan reception space and secure parking. The building has a concierge and a lift.

Located to the south end of the street close to Oxford Circus, Tottenham Court Road and the amenities of the West End.

Features

- Two Double Bedroom
- Two En Suites
- Concierge & Lift
- Secure Designated Parking
- Lease to 2178
- Central Location

Great Portland Street, London, W1W



Second Floor

Total area (approx.): 93.0 sq. m (1001.0 sq. ft)

Dexters

Marylebone
53-55 Weymouth Street
London
W1G 8NJ
Sales
020 7224 5544

Energy Rating: C. We aim to make our particulars both accurate and reliable. However they are not guaranteed; nor do they form part of an offer or contract. If you require clarification on any points then please contact us, especially if you're traveling some distance to view. Please note that appliances and heating systems have not been tested and therefore no warranties can be given as to their good working order.

 **RICS** | Regulated
Estate Agent
and Letting Agent

[dexters.co.uk](https://www.dexters.co.uk)