

Manchester Street, W1U

£830 Per week

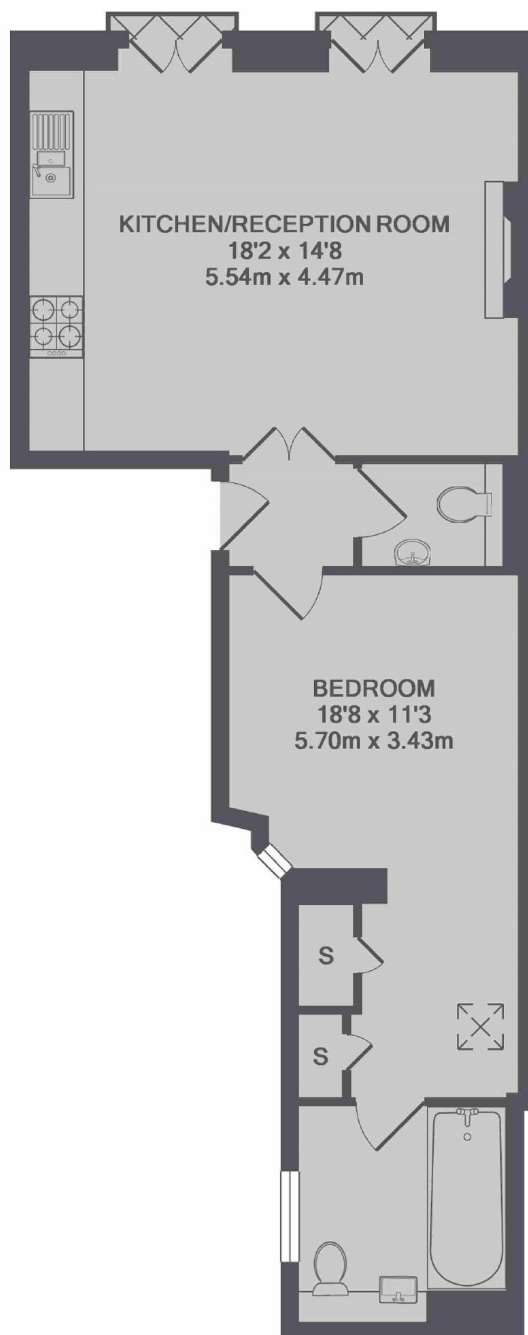
A modern one bedroom apartment on the first floor of a Georgian conversion in Marylebone Village. There is an open-plan kitchen/reception room with wood flooring and floor-to-ceiling windows, one bedroom, bathroom and guest WC.

Manchester Street is moments from Marylebone High Street, which is home to a variety of boutique shops, bars, cafes and restaurants. Bond Street and Baker Street stations are close by.

Features

- First Floor Apartment
- Double Bedroom
- High Ceilings
- Owned and Managed by The Portman Estate
- Complimentary Membership to Portman Concierge

Manchester Street, London, W1U



TOTAL APPROX. FLOOR AREA 569 SQ.FT. (52.9 SQ.M.)

Dexters

Marylebone
53-55 Weymouth Street
London
W1G 8NJ
Lettings
0207 224 5545

Energy Rating: D. We aim to make our particulars both accurate and reliable. However they are not guaranteed; nor do they form part of an offer or contract. If you require clarification on any points then please contact us, especially if you're traveling some distance to view. Please note that appliances and heating systems have not been tested and therefore no warranties can be given as to their good working order.

 **RICS** | Regulated
Estate Agent
and Letting Agent

[dexters.co.uk](https://www.dexters.co.uk)