



Cambridge Terrace, NW1

£3,250 Per week

A fully furnished four bedroom apartment located in this beautiful stucco fronted building moments from Regent's Park.

The nearest stations can be found at Baker Street and Regent's Park, and Marylebone mainline station is a short walk away.

Features

- Moment's From Regent's Park
- Four Double Bedrooms
- Three Bathrooms
- Guest WC
- Two Reception Rooms
- Fully Furnished



Cambridge Terrace, NW1

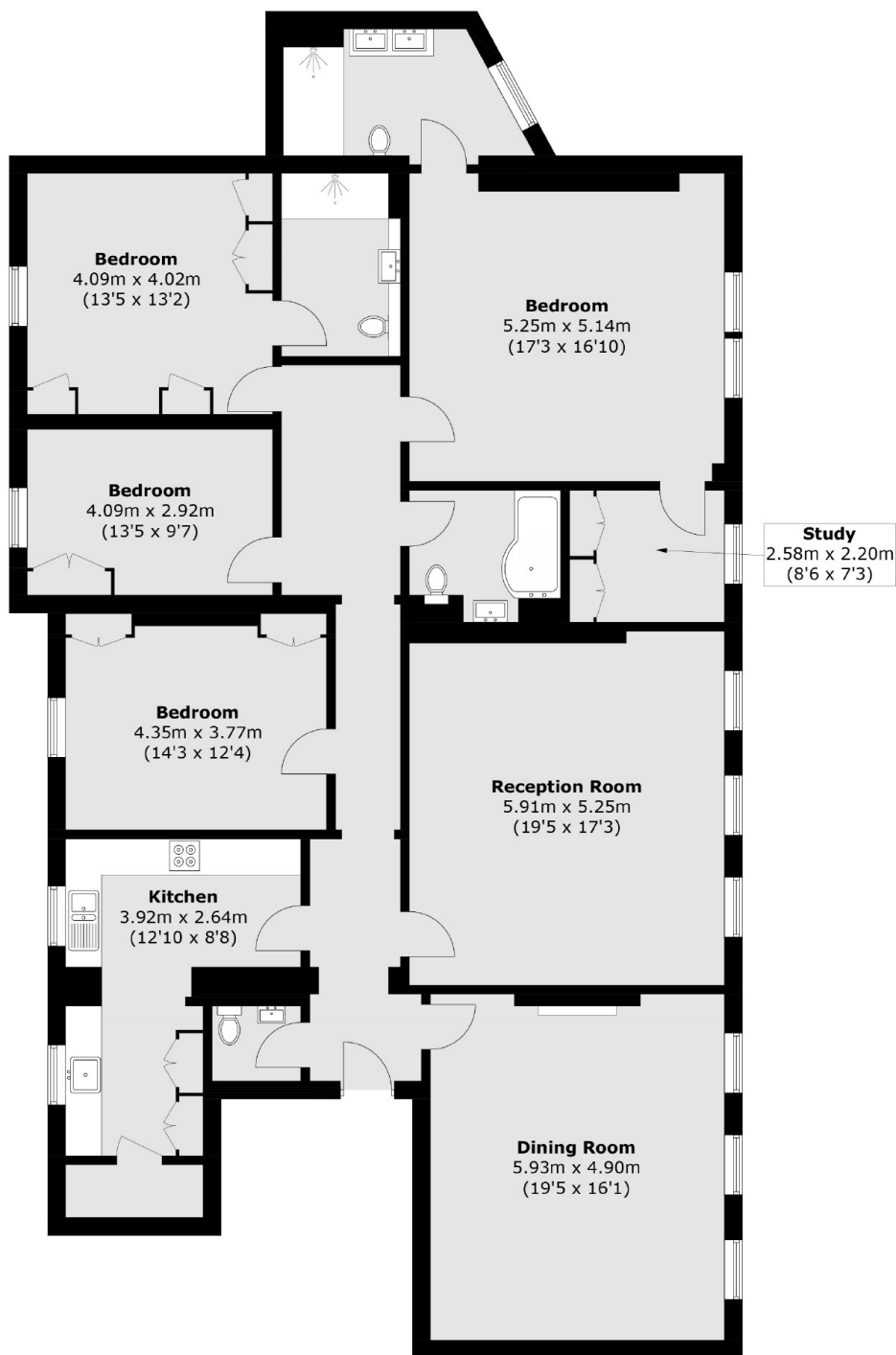
The flat has a good sized reception room and separate dining room, both with lots of natural light. A separate kitchen with modern built-in appliances, and a guest WC off the hallway.

All four bedrooms are double rooms with built-in storage and there are three bathrooms (two en suite).

The location is unrivalled, with the open spaces of Regent's Park on your doorstep, which is home to the elegant flower beds of Avenue Gardens, a boating lake, open air theatre and London Zoo. Within easy reach are the boutique shops, bars and restaurants of Marylebone Village and Portman Village, both a favourite with locals.



Cambridge Terrace, London, NW1



Total area (approx.): 206.3 sq. m (2,220.6 sq. ft)

Dexters

Marylebone
53-55 Weymouth Street
London
W1G 8NJ
Lettings
0207 224 5545

Energy Rating: C. We aim to make our particulars both accurate and reliable. However they are not guaranteed; nor do they form part of an offer or contract. If you require clarification on any points then please contact us, especially if you're traveling some distance to view. Please note that appliances and heating systems have not been tested and therefore no warranties can be given as to their good working order.

 **RICS** | Regulated
Estate Agent
and Letting Agent

[dexters.co.uk](https://www.dexters.co.uk)