



Marylebone Street, W1G

£850 Per week

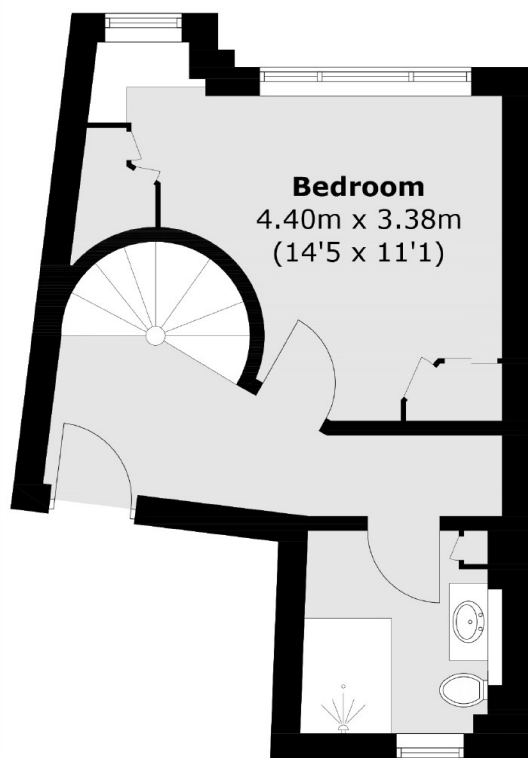
This charming one bedroom duplex flat is located in the heart of Marylebone Village. Set on the third and fourth floor offering spacious accommodation and an abundance of natural light.

Marylebone High Street is famous for its boutique shops, bars and restaurants. Oxford Street, Mayfair and neighbouring Fitzrovia are all nearby, as well as the open spaces of Regent's Park. Bond Street, Oxford Street and Baker Street stations are close by.

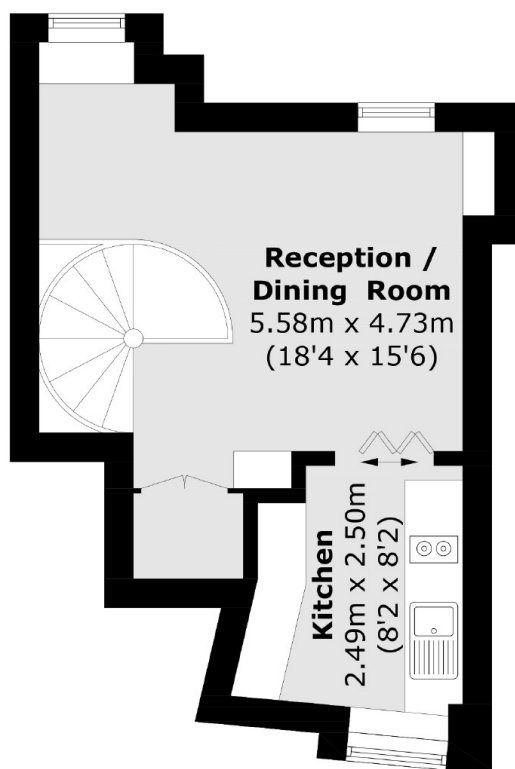
Features

Marylebone Village
Duplex Apartment
One Bedroom
Shower Room
Separate Kitchen

Marylebone Street, London, W1G



Third Floor



Fourth Floor

Total area (approx.): 48.4 sq. m (521.0 sq. ft)