



Seymour Street, W1H

£750 Per week

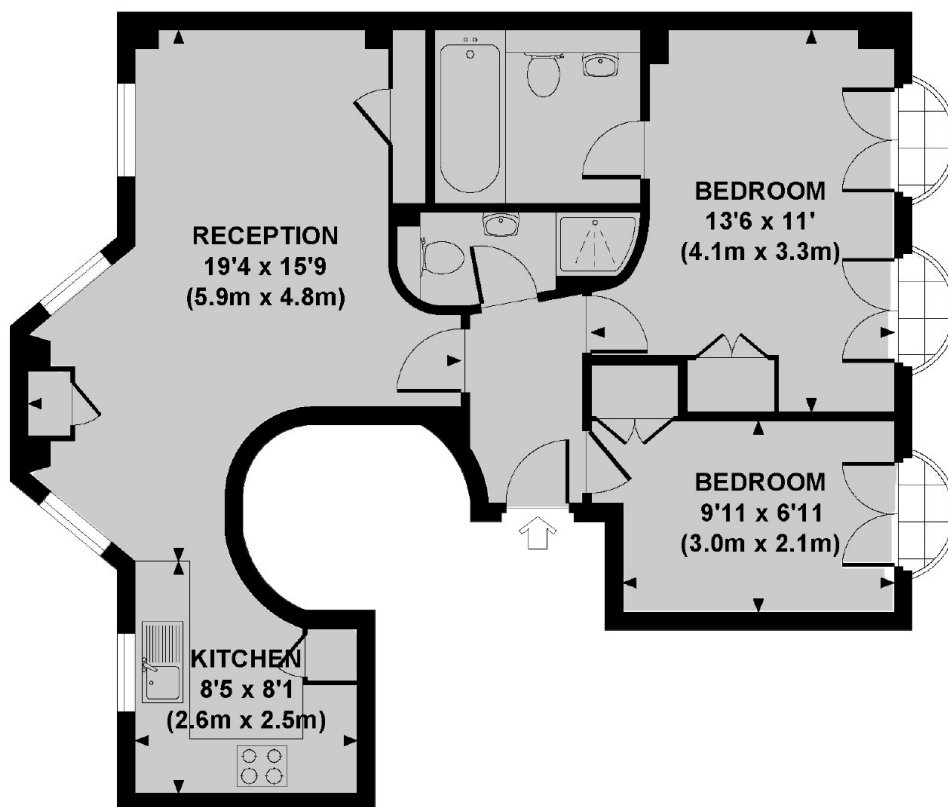
A two bedroom apartment on the first floor, with lift, of this period conversion close to Hyde Park. The property has an open-plan kitchen/reception room with wood flooring, two bedrooms and two bathrooms.

Seymour Street is a short walk from Portman Village, a favourite for locals, providing a village vibe in the heart of London. There are transport links from Marble Arch and Bond Street stations and the open spaces of Hyde Park are close by.

Features

- First Floor Flat
- Lift Access
- High Ceilings
- Two Bedrooms
- Two Bathrooms
- Kitchen/Reception

Seymour Street, London, W1H



Approx. gross internal area
577 Sq Ft. / 53.6 Sq M.

Dexters

Marylebone
53-55 Weymouth Street
London
W1G 8NJ
Lettings
0207 224 5545

Energy Rating: D. We aim to make our particulars both accurate and reliable. However they are not guaranteed; nor do they form part of an offer or contract. If you require clarification on any points then please contact us, especially if you're traveling some distance to view. Please note that appliances and heating systems have not been tested and therefore no warranties can be given as to their good working order.

 **RICS** | Regulated
Estate Agent
and Letting Agent

[dexters.co.uk](https://www.dexters.co.uk)