



Portman Square, W1H

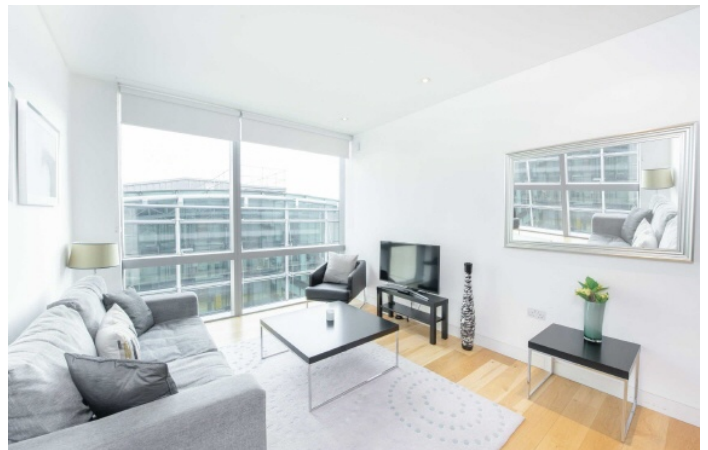
£850 Per week

A luxury one bedroom apartment on the eighth floor of a prestigious development on Portman Square. The building has a lift and 24 hour security.

There are fantastic transport connections with Marble Arch and Bond Street Underground stations nearby. The open spaces of Hyde Park are only a short walk away.

Features

- Garden Square
- One Double Bedroom
- Lift
- 24 Hour Security
- Modern Kitchen
- Open-Plan



Portman Square, W1H

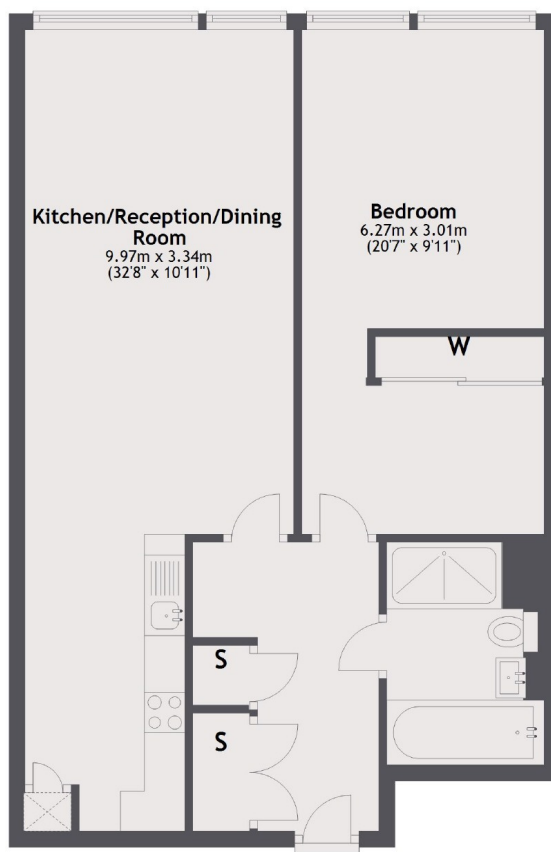
The property has an open-plan kitchen/reception room which is large enough to have both living and dining areas. The room has floor-to-ceiling windows providing superb natural light throughout.

The bedroom is a good sized double room with a built-in wardrobe and there is a modern bathroom off the hallway with a separate shower cubicle.

42 Portman Square sits close to The Portman Estate's New Quebec Street and Seymour Place, a favourite for locals providing a village vibe in the heart of London.



Portman Square, London, W1H



Eighth Floor

Total area: approx. 62.6 sq. metres (673.7 sq. feet)