



Bryanston Square, W1H

£595 Per week

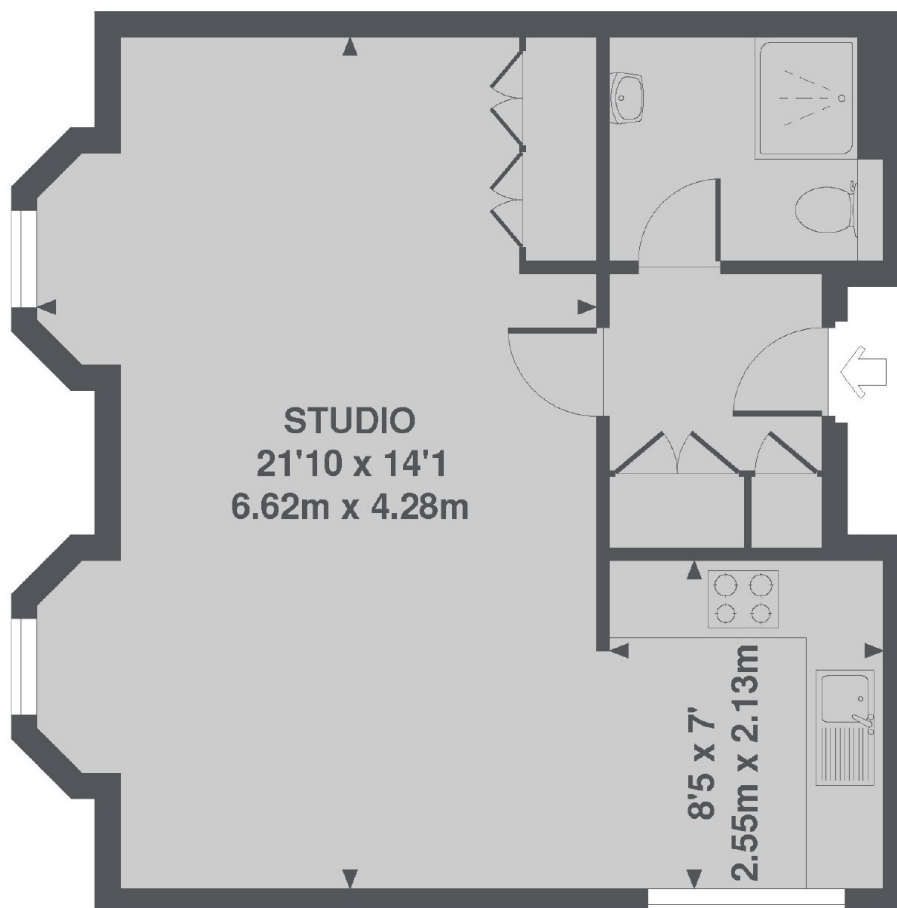
A modern studio apartment on the ground floor of this white stucco fronted building on Bryanston Square. The flat has high ceilings, wood flooring and modern appliances.

Bryanston Square is considered one of London's most desirable Garden Squares. Both Hyde Park and Regents Park, along with the fashionable shops, bars and restaurants of Marylebone and the West End, are close by.

Features

- Ground Floor
- Studio Apartment
- Modern Kitchen
- Owned and Managed by The Portman Estate
- Complimentary Membership to Portman Concierge

Bryanston Square, London, W1H



TOTAL APPROX. FLOOR AREA 431 SQ. FT. (40.0 SQ. M.)

Dexters

Marylebone
53-55 Weymouth Street
London
W1G 8NJ
Lettings
0207 224 5545

Energy Rating: D. We aim to make our particulars both accurate and reliable. However they are not guaranteed; nor do they form part of an offer or contract. If you require clarification on any points then please contact us, especially if you're traveling some distance to view. Please note that appliances and heating systems have not been tested and therefore no warranties can be given as to their good working order.

 **RICS** | Regulated
Estate Agent
and Letting Agent

[dexters.co.uk](https://www.dexters.co.uk)