

## Gloucester Place, W1U

**£923** Per week

A lateral apartment forming part of this Georgian conversion on Gloucester Place. The flat has a large reception room, separate kitchen, double bedroom with built-in wardrobes, bathroom and guest WC.

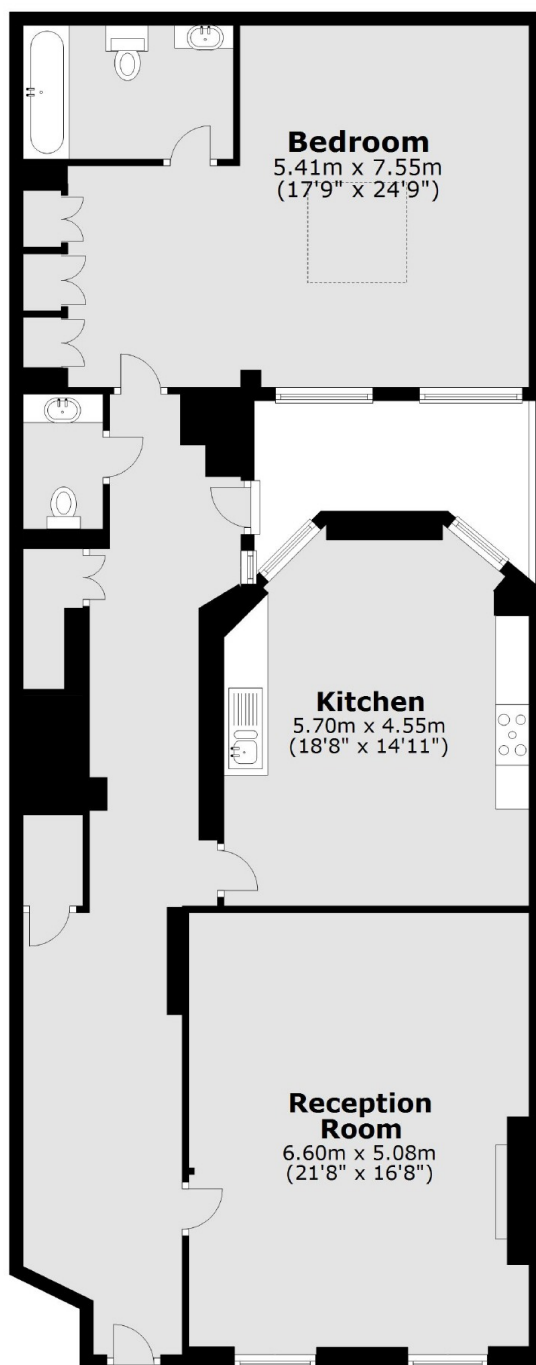
Gloucester Place is well placed for transport links, with Baker Street Underground station and Marylebone mainline station close by.

### Features

- Large Reception
- Separate Kitchen
- One Bedroom
- Owned and Managed by The Portman Estate
- Complimentary Membership to Portman Concierge

# Gloucester Place, London, W1U

## Basement



Total area: approx. 138.6 sq. metres (1491.6 sq. feet)

# Dexters

Marylebone  
53-55 Weymouth Street  
London  
W1G 8NJ  
Lettings  
0207 224 5545

Energy Rating: D. We aim to make our particulars both accurate and reliable. However they are not guaranteed; nor do they form part of an offer or contract. If you require clarification on any points then please contact us, especially if you're traveling some distance to view. Please note that appliances and heating systems have not been tested and therefore no warranties can be given as to their good working order.

 **RICS** | Regulated  
Estate Agent  
and Letting Agent

[dexters.co.uk](https://www.dexters.co.uk)