



Bryanston Square, W1H

£1,356 Per week

A beautifully presented apartment on the ground floor of this attractive white stucco fronted Georgian building on Bryanston Square.

Hyde Park and Regent's Park are only a short walk away and there are good transport links from Marble Arch, Bond Street and Baker Street tubes as well as Marylebone mainline station.

Features

- Garden Square
- Ground Floor Flat
- One Double Bedroom
- Single Bedroom/Study
- Two Shower Rooms
- Furnished



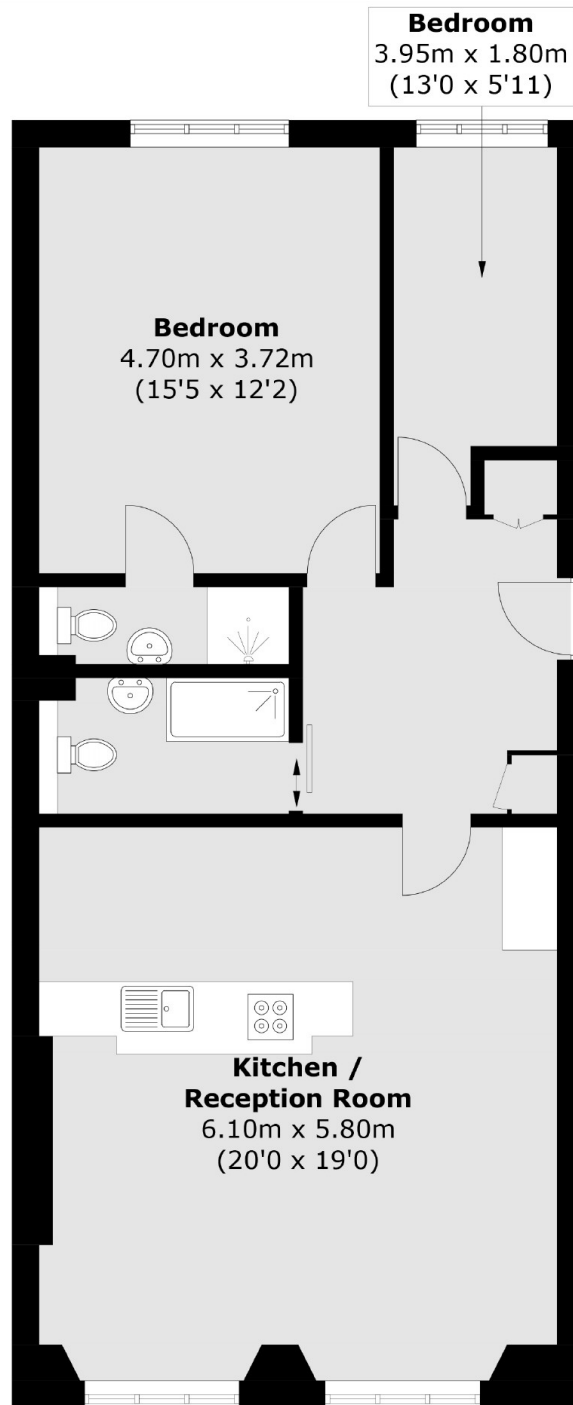
Bryanston Square, W1H

The apartment has a stylish open-plan kitchen/living/dining room with built-in appliances to the kitchen. There is a good sized double bedroom with an en suite shower room, a second single bedroom which could also be used as a study, and a second shower room off the hallway.

Bryanston Square is considered one of London's most desirable Garden Squares. The vibrant shops, bars, cafes and restaurants of Marylebone Village and Portman Village are within easy reach, both providing a village vibe in the heart of central London.



Bryanston Square, London, W1H



Total area (approx.): 77.2 sq. m (831.0 sq. ft)

Dexters

Marylebone
53-55 Weymouth Street
London
W1G 8NJ
Lettings
0207 224 5545

Energy Rating: E. We aim to make our particulars both accurate and reliable. However they are not guaranteed; nor do they form part of an offer or contract. If you require clarification on any points then please contact us, especially if you're traveling some distance to view. Please note that appliances and heating systems have not been tested and therefore no warranties can be given as to their good working order.

 **RICS** | Regulated
Estate Agent
and Letting Agent

[dexters.co.uk](https://www.dexters.co.uk)