



Seymour Mews, W1H
£975,000



Seymour Mews, W1H

A two bedroom, two bathroom mews house. Made available by The Portman Estate stewards of one of London's great historic estates.

The property offers potential for improvement and is sold with a long lease.

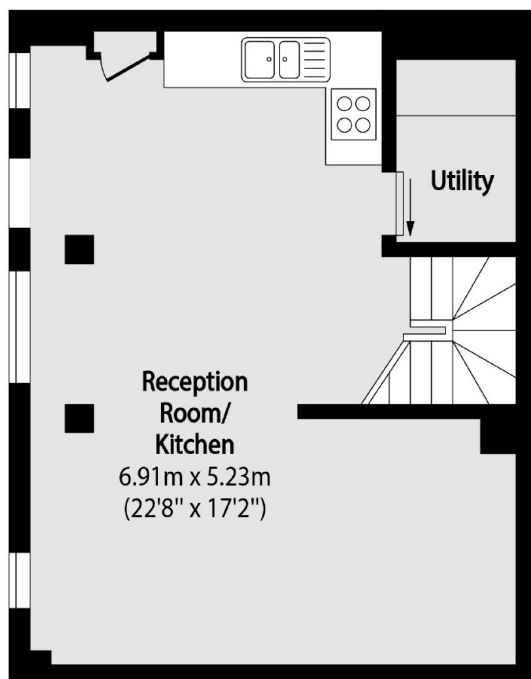
Located north of Oxford Street with access to Bond Street Station and Portman Villages restaurants, wine-bars, and garden squares.

Features

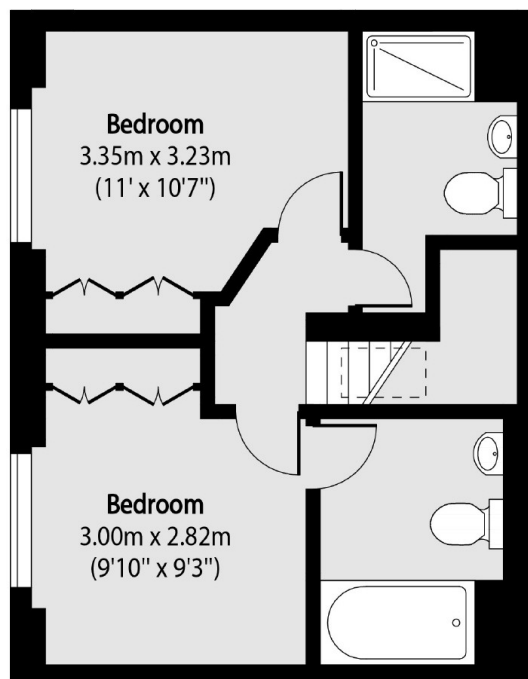
- Two Bedrooms
- Two Bathrooms
- Reception
- Kitchen
- Close to Oxford Street
- Bond Street Station 0.3 miles



Seymour Mews, London, W1H



Ground Floor



First Floor

Total area (approx): 70.32 sq m (757 sq. ft)