



## George Street, W1U

£550 Per week

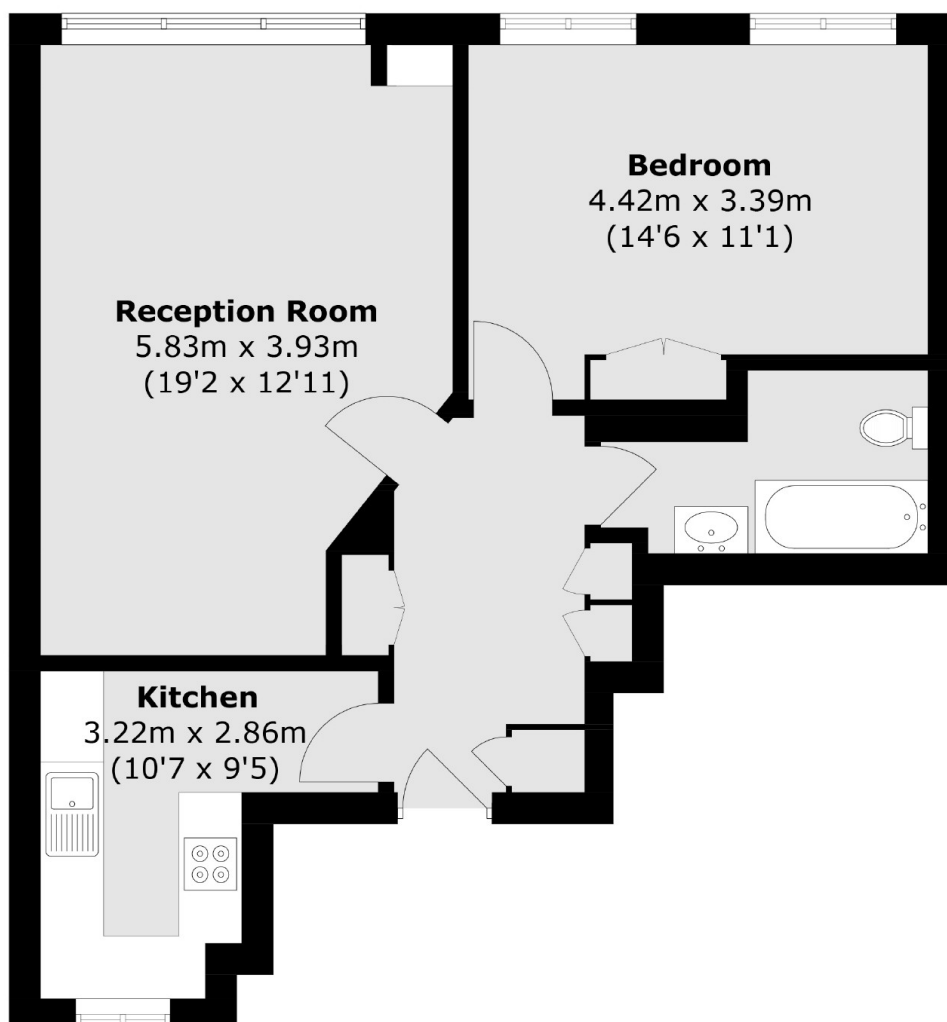
A well-presented one bedroom apartment on the third floor of this modern building close to Marylebone High Street. The property has a good sized reception, separate kitchen, double bedroom and bathroom.

George Street is a short walk from Marylebone High Street, which is home to a variety of boutique shops, bars and restaurants. Bond Street, Marble Arch, and Marylebone stations are all close by, as well as Hyde Park and Regent's Park.

### Features

Third Floor Flat  
One Bedroom  
One Bathroom  
Owned and Managed by The Portman Estate  
Complimentary Membership to Portman Concierge

# George Street, London, W1U



Total area (approx.): 57.2 sq. m (614.6 sq. ft)