



George Street, W1H

£692 Per week

Dexters



George Street, W1H

A newly refurbished one bedroom apartment on the second floor of an attractive Georgian building on George Street, moments from Hyde Park.

The property has an open-plan kitchen/reception room with wood flooring, high ceilings and brand new built-in appliances. The bedroom is a good sized double room with built-in wardrobes and there is a modern shower room off the hallway.

The apartment forms part of a substantial building which has just been completely refurbished throughout, with phone entry systems to all of the flats.

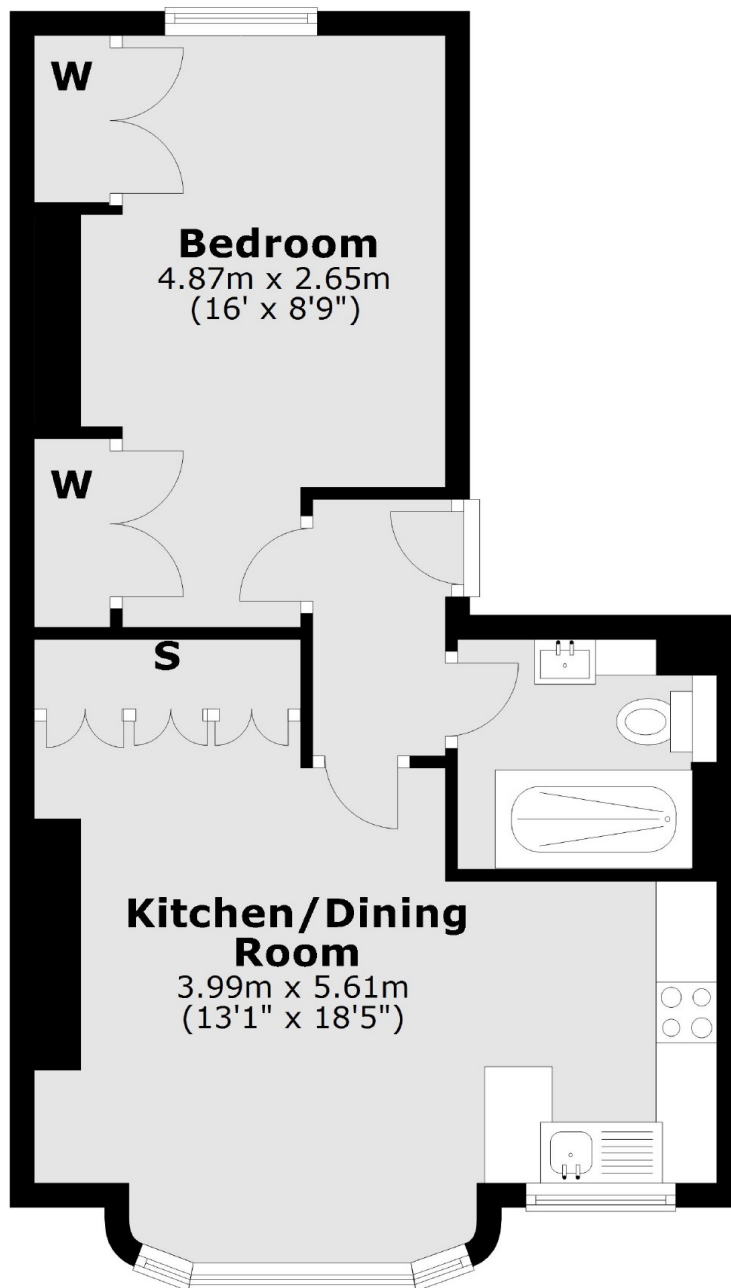
George Street is moments from the open spaces of Hyde Park and a short walk from the vibrant shops, bars and restaurants of Portman Village and Marylebone Village. Edgware Road, Marble Arch and Bond Street stations are all close by.

Features

Second Floor
One Bedroom
Modern Spec
Owned and Managed by The
Portman Estate
Complimentary Membership to



**George Street,
London, W1H**



Second Floor

Total area: approx. 43.7 sq. metres (470.0 sq. feet)

Dexters

Marylebone
53-55 Weymouth Street
London
W1G 8NJ
Lettings
0207 224 5545

Energy Rating: E. We aim to make our particulars both accurate and reliable. However they are not guaranteed; nor do they form part of an offer or contract. If you require clarification on any points then please contact us, especially if you're traveling some distance to view. Please note that appliances and heating systems have not been tested and therefore no warranties can be given as to their good working order.

 **RICS** | Regulated
Estate Agent
and Letting Agent

[dexters.co.uk](https://www.dexters.co.uk)