



## Robert Adam Street, W1U

**£625** Per week

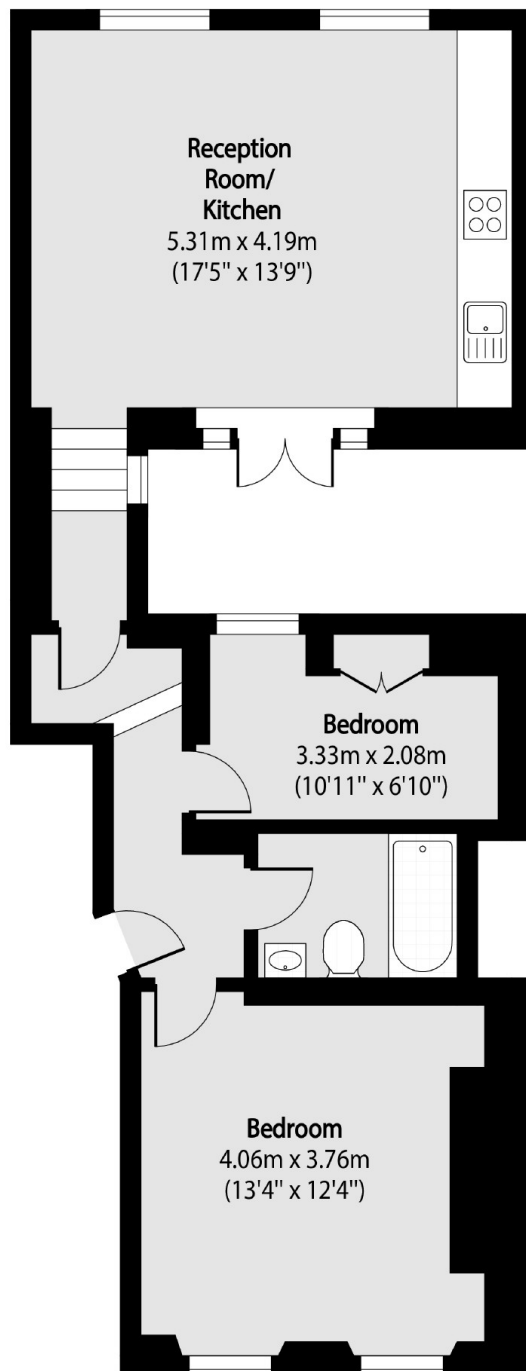
A modern one bedroom apartment forming part of this townhouse conversion close to Marylebone High Street. The flat has an open-plan kitchen/reception room with doors onto a private terrace, one double bedroom, bathroom and a second room which could be used as a study/office.

Robert Adam Street is moments from Manchester Square and the boutique shops, bars and restaurants of Marylebone High Street. There are superb transport links from Bond Street, Marble Arch and Baker Street Underground stations, which are all within easy reach.

### Features

- Kitchen/Reception
- Bedroom & Study Room
- Private Terrace
- Owned and Managed by The Portman Estate
- Complimentary Membership to Portman Concierge

# Robert Adam Street, London, W1U



Total area (approx): 56.86 sq m (612 sq. ft)