

Chiltern Street
Marylebone, W1U

Dexters



About the property

This two bedroom apartment forms part of a luxurious development on one of London's most fashionable roads, Chiltern Street. The apartment has been fitted to an immaculately high standard.

The reception room has plenty of space for both living and dining areas, with floor-to-ceiling windows providing superb natural light and a door leading onto the private balcony with views across Marylebone.

The bedrooms are good size double rooms with en suite

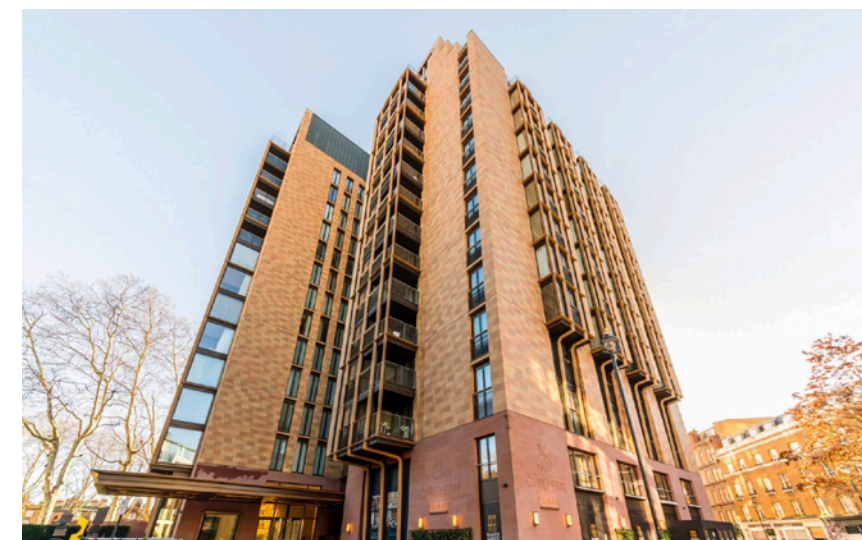
bathrooms and ample storage. The separate kitchen has integrated appliances, marble worktops and LED lighting.

The development has 24-hour security, CCTV plus a full concierge service with valet parking to the underground car park. Furthermore there is a state-of-the-art gym and a resident's club lounge plus a meeting room.

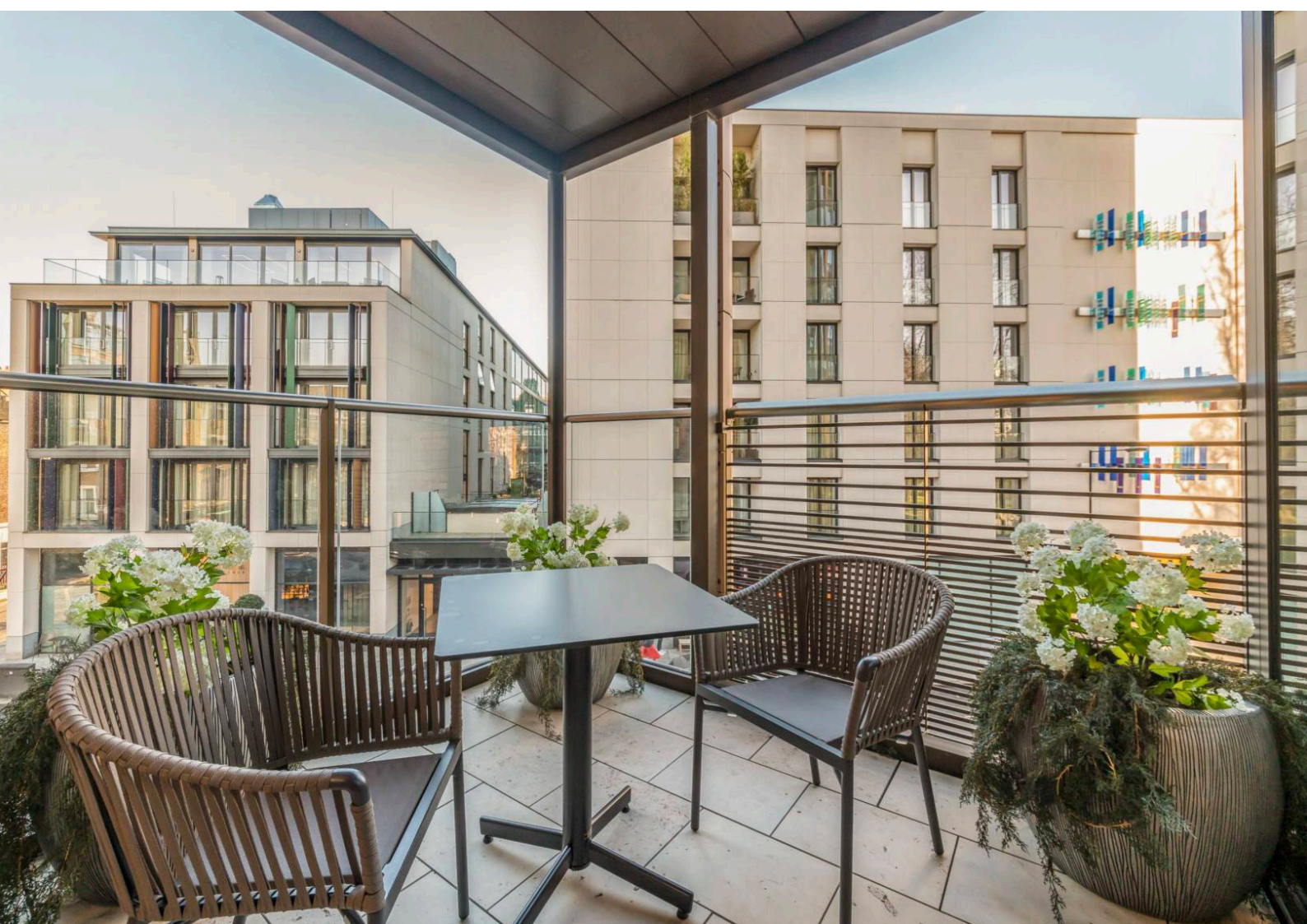
The location is unrivalled. Chiltern Street is in Marylebone Village which is a favourite for locals providing a village feel in the heart of central London.

Key features

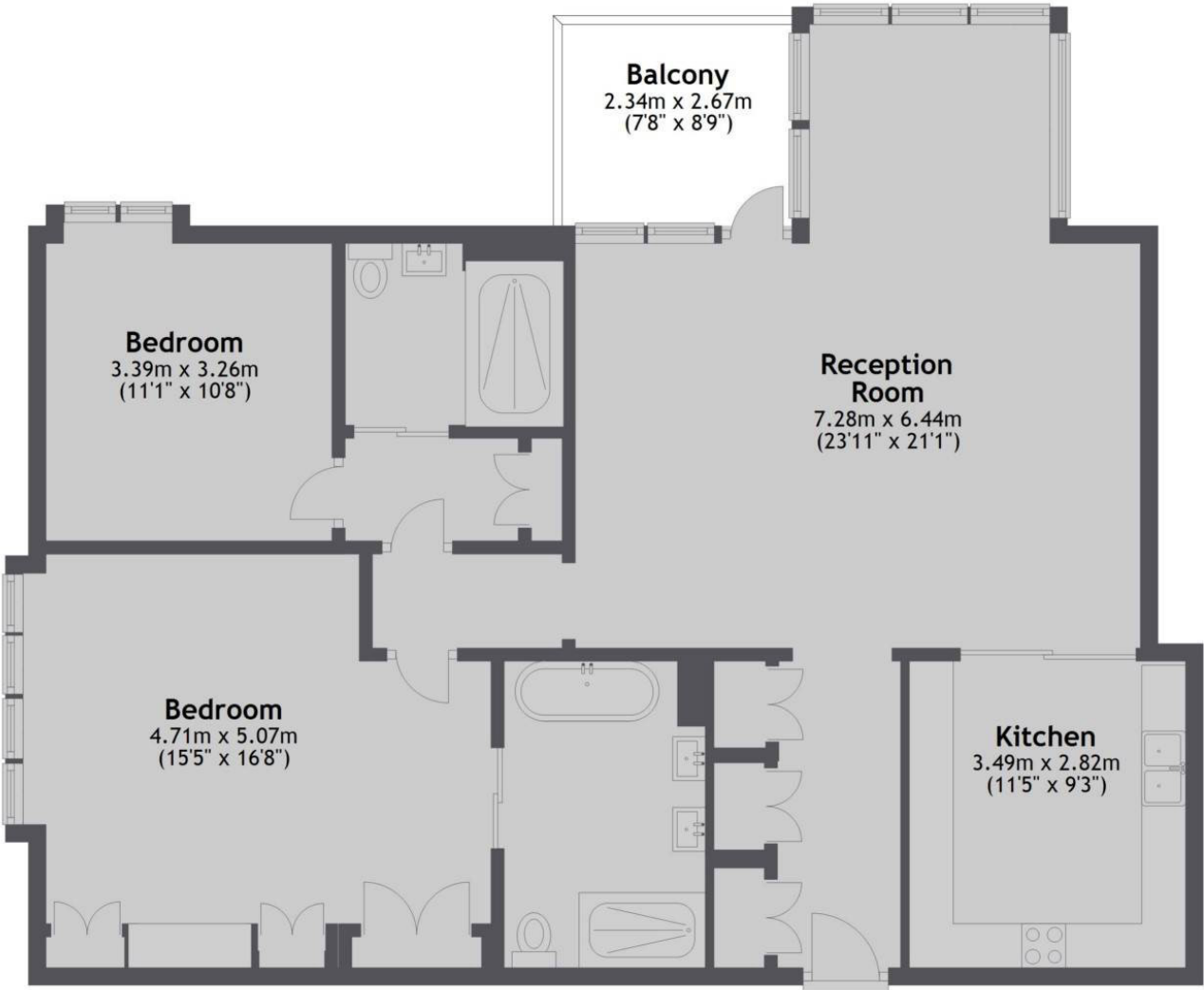
- Two Bedrooms
- Two Bathrooms
- Balcony
- 24-Hour Concierge
- Gym
- Business Lounge







Second Floor



TOTAL APPROX. FLOOR AREA 1,206.0 SQ. FT (112.0 SQ. M)

Energy Rating: B. We aim to make our particulars both accurate and reliable. However they are not guaranteed; nor do they form part of an offer or contract. If you require clarification on any points then please contact us, especially if you're traveling some distance to view. Please note that appliances and heating systems have not been tested and therefore no warranties can be given as to their good working order.



Dexters Marylebone
55 Weymouth Street,
London, W1G 8NJ
020 7224 5545

Dexters