



Baker Street, NW1

£1,350,000

A two double bedroom apartment situated on the fourth floor of Chiltern Court, a 1929 residential block on Baker Street. Notable former residents are the writer HG Wells and the composer Norman Coates.

Located above Baker Street stations Bakerloo, Circle, Hammersmith & City, Jubilee and Metropolitan lines. Regent's Park and Marylebone High Street are a short walk away.

Features

- Porters on site 24 Hours
- Two Residents Lifts
- Two Double Bedrooms
- Two Bathrooms
- Herringbone Parquet Flooring



Baker Street, NW1

The apartment blends period features with contemporary additions to create a bright central London home. A wide hallway which could be utilised as a study or reception space has double doors to a reception room. There is a kitchen-breakfast room with space to dine, two double bedrooms, a bathroom and a shower room.



Baker Street, London, NW1

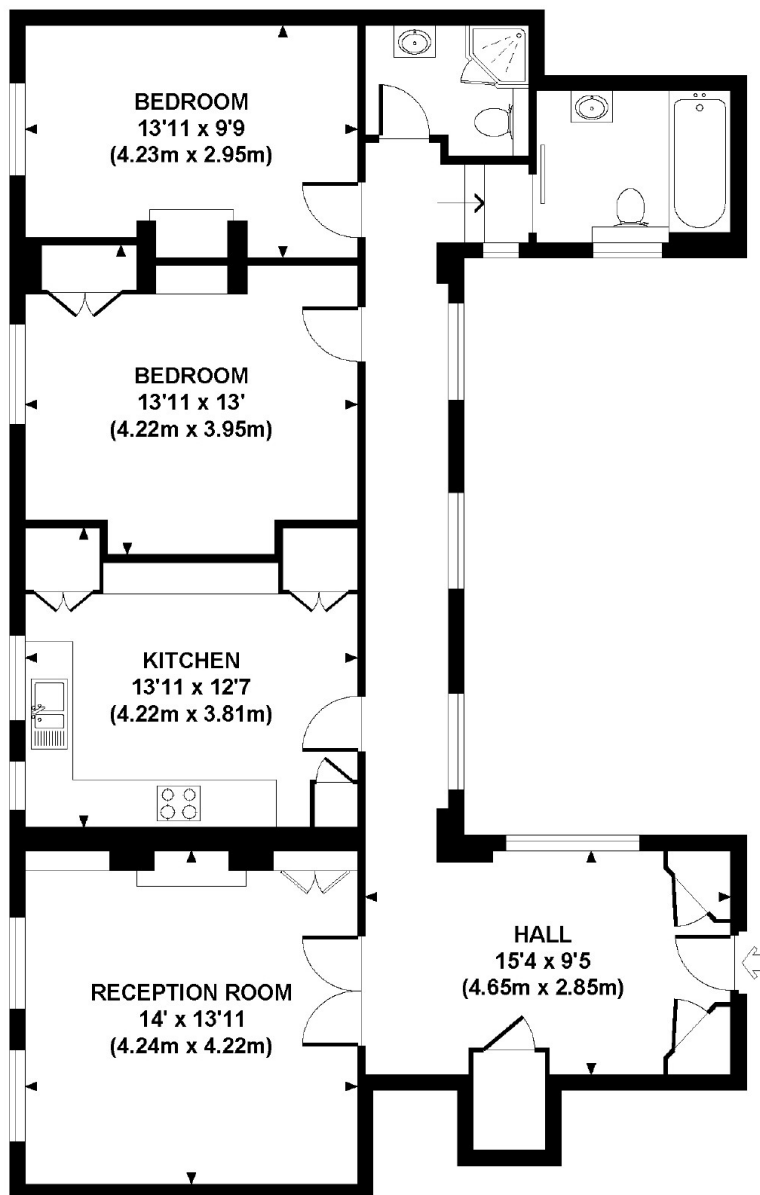
CHILTERN COURT, BAKER STREET, NW1

Approx. gross internal area

1035 Sq Ft. / 96.2 Sq M.

Representation of current layout

Not to scale.



FOURTH FLOOR

Dexters

Marylebone
53-55 Weymouth Street
London
W1G 8NJ

Sales
020 7224 5544

Energy Rating: D. We aim to make our particulars both accurate and reliable. However they are not guaranteed; nor do they form part of an offer or contract. If you require clarification on any points then please contact us, especially if you're traveling some distance to view. Please note that appliances and heating systems have not been tested and therefore no warranties can be given as to their good working order.

 **RICS** | Regulated
Estate Agent
and Letting Agent

[dexters.co.uk](https://www.dexters.co.uk)