



Bryanston Square, W1H

£692 Per week

A two bedroom apartment forming part of an attractive Georgian conversion on Bryanston Square. The flat has a good sized reception room, modern kitchen, two bedrooms, shower room and a further guest WC.

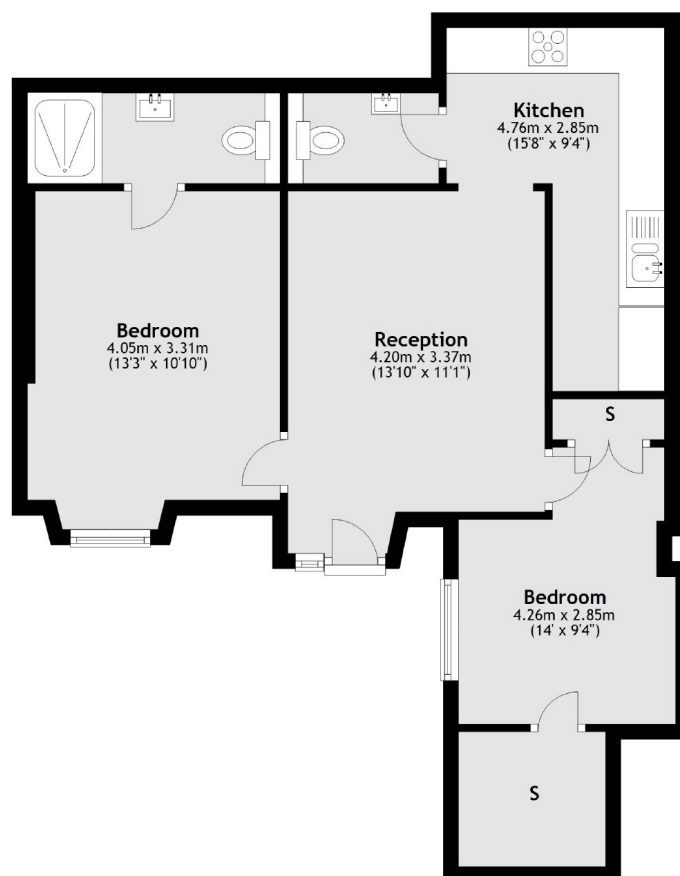
Bryanston Square is considered one of London's most desirable Garden Squares, offering resident only gardens in the heart of central London. Both Hyde Park and Regent's Park close by. Bond Street, Marble Arch and Baker Street stations are all close by.

Features

Garden Square
Two Bedrooms
Shower Room
Guest WC
Modern Finish
Wood Flooring

Bryanston Square, London, W1H

Lower Ground Floor



Total area: approx. 60.3 sq. metres (648.7 sq. feet)