



Hallam Street, W1W

£519 Per week

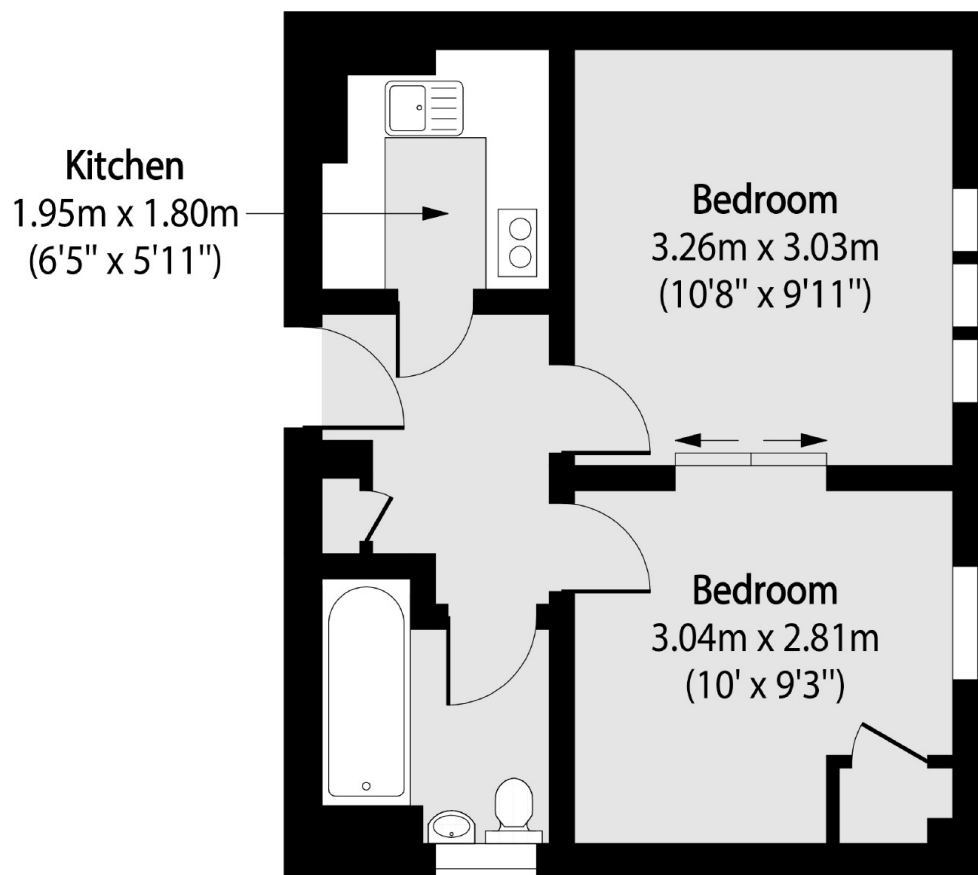
This well positioned one bedroom apartment is situated in the prime Marylebone. The property has been newly repainted and features wooden flooring throughout, ample storage, and an on-site porter.

Hallam Court is conveniently situated near Great Portland Street which provides links to the Circle, Metropolitan, and Hammersmith & City lines. This prime location also is a stones throw away from Oxford Street and the West End, providing an abundance of choice for restaurants, shopping and entertainment.

Features

- One Bedroom Apartment
- Newly Decorated
- Wooden Floors
- Great Storage
- High Ceilings
- Porter

**Hallam Street,
London, W1W**



Total area (approx): 30.90 sq m (333 sq. ft)

Dexters

Marylebone
53-55 Weymouth Street
London
W1G 8NJ
Lettings
0207 224 5545

Energy Rating: C. We aim to make our particulars both accurate and reliable. However they are not guaranteed; nor do they form part of an offer or contract. If you require clarification on any points then please contact us, especially if you're traveling some distance to view. Please note that appliances and heating systems have not been tested and therefore no warranties can be given as to their good working order.

 **RICS** | Regulated
Estate Agent
and Letting Agent

[dexters.co.uk](https://www.dexters.co.uk)