



Upper Montagu Street, W1H

£525 Per week

This well-presented apartment is situated on a quiet street in Marylebone. The flat has an open-plan kitchen/reception room, double bedroom and bathroom, with wood-flooring throughout.

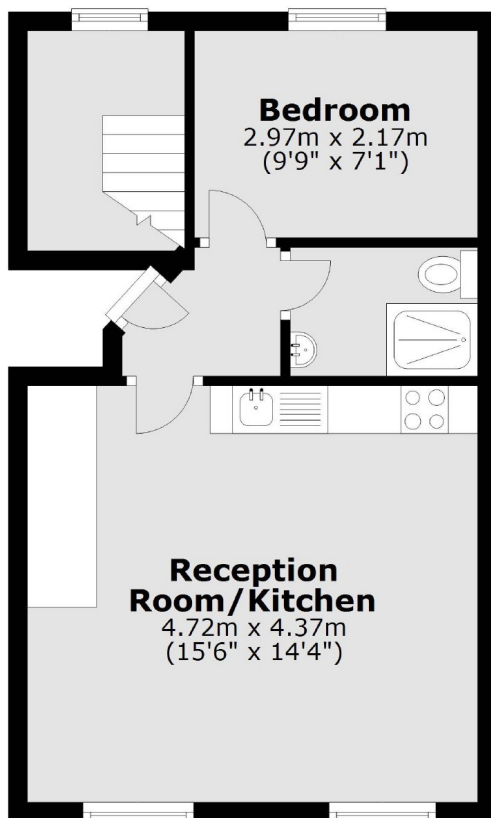
The property is close to the endless shops, bars and restaurants of Marylebone, Fitzrovia, Oxford Street and Regent's Street, whilst the open spaces of Regent's Park are within easy reach.

Features

- First Floor Flat
- Open-Plan
- Modern Kitchen
- One Bedroom
- One Bathroom
- Wood Flooring

Upper Montagu Street, London, W1H

First Floor



Total area: approx. 36.4 sq. metres (392.0 sq. feet)