



## Allsop Place, NW1

### £1,500,000

A beautifully presented two double bedroom, two bathroom apartment with a private balcony and secure under-building parking. Ideally located between Regent's Park and Marylebone High Street.

Situated in a prime central London location, residents enjoy close proximity to the open spaces of Regent's Park and the vibrant shops, restaurants, and cafés of Marylebone High Street.

### Features

- Two Double Bedrooms
- Two Bathrooms
- Under Building Parking Space
- Day Porter and Lift
- Third Floor
- Lease 999 from 2010



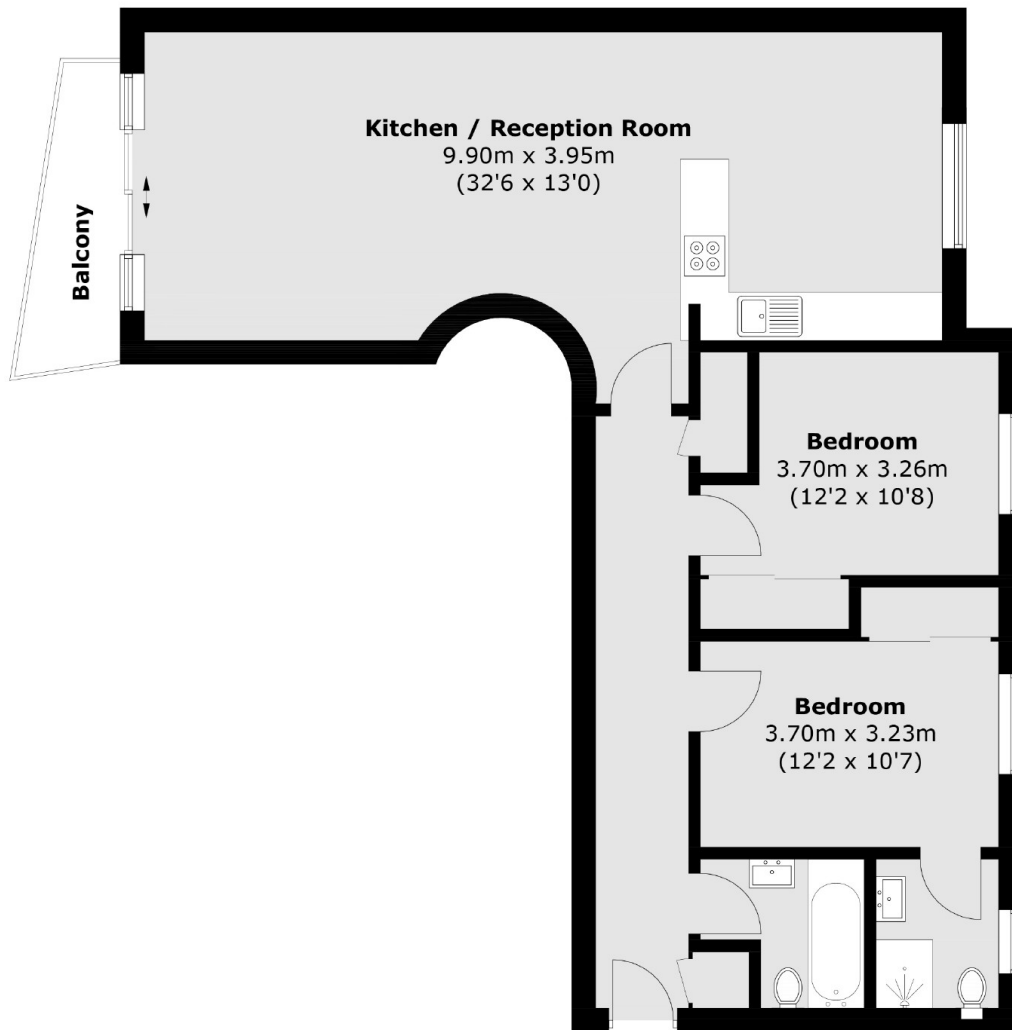
## Allsop Place, NW1

This modern apartment offers spacious living with two well-proportioned double bedrooms, including a principal bedroom with en-suite bathroom, a stylish family bathroom, and an open-plan living and dining area leading to a private balcony. The property also benefits from secure underground parking, lift access, and a concierge service.





# Allsop Place, London, NW1



## Third Floor

Total area (approx.): 78.8 sq. m (848.2 sq. ft)  
Balcony area (approx.): 3.8 sq. m (40.9 sq. ft)

# Dexters

Marylebone  
53-55 Weymouth Street  
London  
W1G 8NJ  
Sales  
020 7224 5544

Energy Rating: B. We aim to make our particulars both accurate and reliable. However they are not guaranteed; nor do they form part of an offer or contract. If you require clarification on any points then please contact us, especially if you're traveling some distance to view. Please note that appliances and heating systems have not been tested and therefore no warranties can be given as to their good working order.

 **RICS** | Regulated  
Estate Agent  
and Letting Agent

[dexters.co.uk](https://www.dexters.co.uk)