



## Allsop Place, NW1

£1,799,000

A two double bedroom, two bathroom apartment in a modern apartment building with day porter, balcony and under building parking. Located between Regents Park and Marylebone High Street.

Local transport links are at Baker Street. Clarence Gate, the south entrance of Regents Park is moments away.

### Features

Two Double Bedrooms  
Two Bathrooms  
Under Building Parking  
Day Porter and Lift  
Third Floor  
Lease 999 from 2010



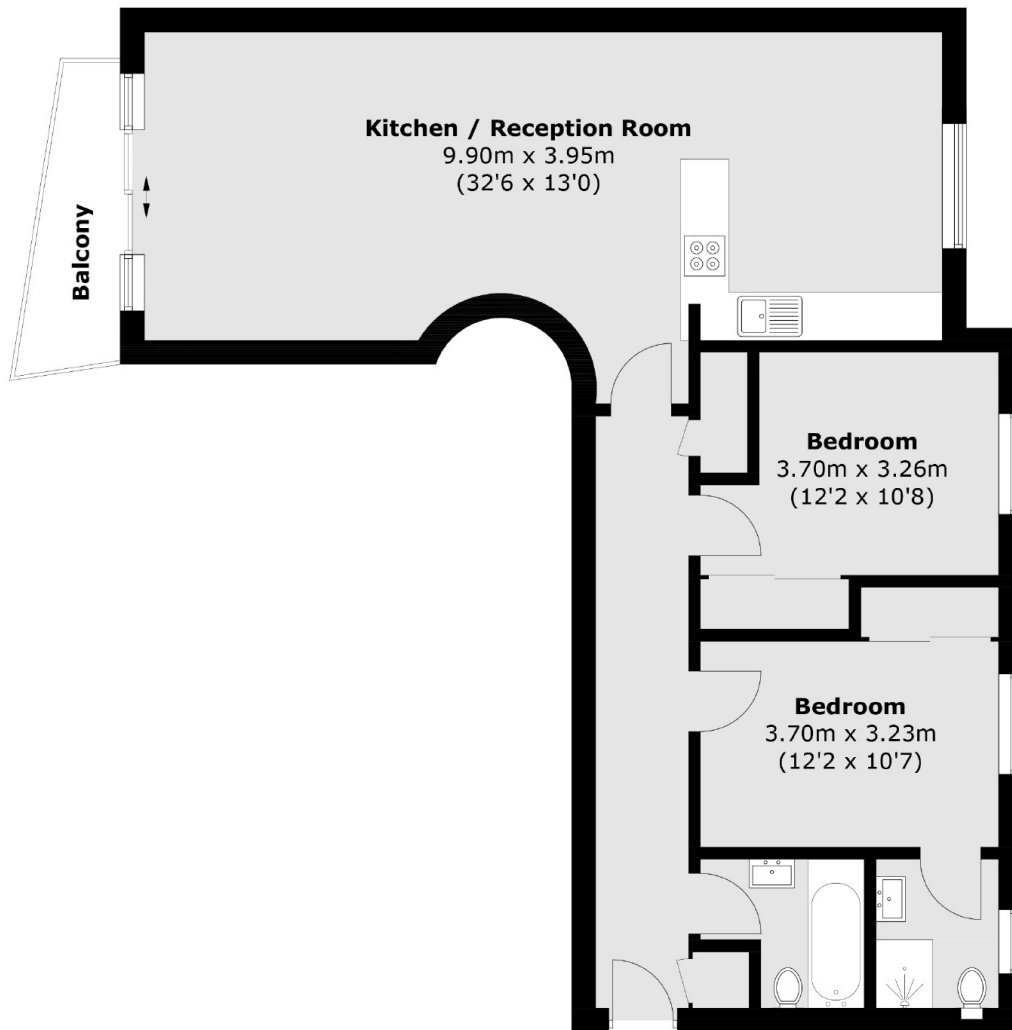


## Allsop Place, NW1

The apartment has a 33 ft combined reception kitchen with adequate space to dine. The room is dual aspect and a glazed door opens to the balcony. The main bedroom has fitted wardrobes and an en suite bathroom room, The second double bedroom also has fitted wardrobes. Additionally there is a main bathroom.



# Allsop Place, London, NW1



## Third Floor

Total area (approx.): 78.8 sq. m (848.2 sq. ft)  
Balcony area (approx.): 3.8 sq. m (40.9 sq. ft)